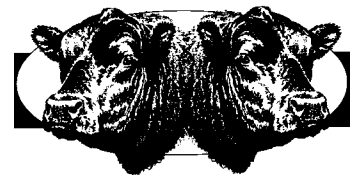


To All Beef Producers



DEAR FRIENDS,

We invite you to be with us on Saturday, April 20th for the 2013 version of the Southwest Virginia Angus Doubleheader. This year we will be selling 50 lots of registered Angus females, which consist of Spring calving pairs, Fall calving pairs, bred heifers and open heifers. There will also be a nice group of fall-calving commercial bred heifers from the Cox family. There is something for everyone, no matter what time of year your personal preference is for calving.

The fifteenth annual version of the Southwest Virginia Angus Performance Tested Spring Bull sale follows the females. They were all fed as a group at G&E Farm in Gretna, VA. They were weighed off test on 3-8-13 and evaluated by a VDACS State Grader. This is a top-notch set of bulls; they averaged 4.05 lbs gain on test and their average 365 day adjusted weight is 1218 lbs. All of the bulls qualified under the Virginia Quality Assurance program and are designated with a VQA symbol underneath the EPDs. More information will be available on the bulls sale day. The bulls tested negative for TB and Brucellosis within 30 days prior to the sale. Negative BVD PI test at delivery on all bulls.

The sale starts at 12 noon with the females selling first. You are welcome to come by on Friday, April 19th in the afternoon or on Saturday morning prior to the sale to evaluate the cattle being offered for sale. All animals selling in this sale either have no carrier ancestry or have tested AM, CA and/or NH free. We are on the web at swvaangus.org; look for additional information on the bulls at this site.

I encourage you to study the pedigrees and performance information on these cattle. Many selling are sired by some of the most proven bulls available in the breed. The consignors of these cattle offered in this sale have been in business for a number of years. They are offering some of their best genetics from which you may select. The EPD's and pedigrees, along with individual performance, will assist you in making your selections.

We look forward to seeing you on Saturday, April 20th. Please feel free to contact any of the consignors or the sale coordinator, George T. Johnstone Jr. at 276-620-4901, or the sale auctioneer, Smith Reasor at 276-620-3123.

Sincerely,

George T. Johnstone Jr.
George T. Johnstone Jr.



1 LUCAS LADY VT OBJ 143A

SS OBJECTIVE T510 OT26

DOB 4/3/11

VT OBJECTIVE DAF 802

Tatt 143A

VT 208 NEW DESIGN B36

Reg. 16891728

K C F BENNETT 6595 M338

| | |
|----|----|
| BW | .6 |
| WW | 52 |
| YW | 99 |
| M | 31 |

LUCAS LADY KCF 6595 768D

LUCAS LADY 3F10 OF 5175

COW

Consignor: **BAR NUN CATTLE**

A very sound female that has great EPD's that was bred in the Lucas Farm herd. Bred on 11/24/12 to Rito 9M25 of Rita 5F56 whose EPD's are +1.4 +63 +105 +29 then pasture exposed to KCF Bennett Answer X48. Confirmed safe.

3 BRIDGES ETTARRE 5080

BON VIEW NEW DESIGN 1407

DOB 12/23/04

LCC SULTAN G041

Tatt 5080

LEACHMAN BESSIE F3049

Reg. 15046423

BRIDGES EXECUTIVE 3071

| | |
|----|-----|
| BW | 1.9 |
| WW | 38 |
| YW | 73 |
| M | 18 |

BAF ETTARRE 5358

BRIDGES ETTARRE 0160

COW

Consignor: **BAR NUN CATTLE**

A very thick and powerful female that raised an excellent heifer calf that was kept to replace her mother. She was bred on 12/1/12 to GAR Prophet whose EPD's are -.6 +85 +140 +33 then pasture exposed to KCF Bennett Answer X48. Confirmed safe.

2 WAF POWERHOUSE 74188

MILL BAR POWERHOUSE VRD 2676

DOB 11/23/07

H C POWERHOUSE 318

Tatt 7410

H C MISS IDEAL 668A

Reg. 15863720

K A LUCYS BOY 031

| | |
|----|-----|
| BW | 3.2 |
| WW | 43 |
| YW | 79 |
| M | 21 |

WAF LUCY 4188

W A F DONNA GALE 1-88

COW

Consignor: **BAR NUN CATTLE**

An excellent cow that has produced some excellent calves for Bar Nun. She did a fine job with her 9/10/12 bull calf sired by Sitz Upward 307R. Bred on 12/1/12 to GAR Prophet then pasture exposed to KCF Bennett Answer X48. Confirmed safe.

4A BF NEW DAYS LADY 220

BOYD NEW DAY 8005

DOB 4/21/12

B F NEW DAY 962

Tatt 220

B F BLACK

Reg. 17336355

SUMMETT 001

| | |
|----|-----|
| BW | 1.7 |
| WW | 40 |
| YW | 69 |
| M | 19 |

B F MINUETTE

B F TRAVELERS MINUETTE

COW

Consignor: **BULLOCK FARM**

The first of three nice young females from the BF New Day 962 herd sire used at Bullock Farms. Back to some older blood on the bottom side. Just a solid young functional heifer with potential to make a top cow.



Boyd New Day 8005

4B BF DANA NEW DAY 208

BOYD NEW DAY 8005

DOB 3/22/12

B F NEW DAY 962

Tatt 208

B F BLACK

Reg. 17336356

SUMMETT 001

| | |
|----|-----|
| BW | 1.6 |
| WW | 33 |
| YW | 58 |
| M | 15 |

B F DANA

B F BANDANA

COW

Consignor: **BULLOCK FARM**

Another nice young heifer from the BF New Day 962 bull. A little older but with the same potential to become a good solid cow. With this older blood there are very few limits when deciding what path to take come breeding season.

4C BF 2RT2 NEW DAY 209

BOYD NEW DAY 8005
 B F NEW DAY 962
 B F BLACK
 G A F TRAVELER 2RT2 353
 B F BELLES 2RT2 747
 B F BELLES PRIDE 205

DOB 3/18/12
 Tatt 209
 Reg. 17336357

| | |
|----|-----|
| BW | 1.4 |
| WW | 34 |
| YW | 62 |
| M | 13 |

COW

Consignor: **BULLOCK FARM**

The oldest of the three heifers from Bullock Farms. A little different pedigree on the bottom out of a dam from the GAF Traveler 2RT2 353 bull who left many good females in the herd. All three heifers are open and ready to breed to the bull of your choice.

5A HC BLACKCAP 1152J17

S S OBJECTIVE T510 0T26
 SYDGEN MANDATE 6079
 SYDGEN GINA 4235
 B C C BUSHWACKER 41-93
 HC BLACKCAP 52J17
 BURTON BLACKBIRD OF B&J 10D

DOB 9/11/11
 Tatt 15217
 Reg. 17008478

| | Sire | Dam |
|----|------|-----|
| BW | .5 | 3.8 |
| WW | 66 | 52 |
| YW | 126 | 84 |
| M | 32 | 23 |

COW

Consignor: **D&J MEADE FARM**

A SydGen Mandate 6079 daughter bred at Harold Hawkins Farm. These heifers weighed 1125 lbs at breeding. They are big, deep ribbed females. This heifer was bred on 12/18/12 to the Select Sires Bull G A R Ingenuity whose EPD's are BW +1.9 WW +64 YW +113 M +36, Docility +34. After 12/25/12, they were pasture exposed to HC Traveler 1152 H19, a Sydgen CC&7 son whose EPDs are +1.4 +47 +93 +37.

5B DOUBLE G MISS ABERDEEN 1112

C R A BEXTOR 872 5205 608
 TC ABERDEEN 759
 TC BLACKBIRD 4034
 BON VIEW NEW DESIGN 878
 MULLINS 4178
 P R 0T9 OF FOCUS 538

DOB 9/1/11
 Tatt 1112
 Reg. 17009104

| | |
|----|-----|
| BW | 1.7 |
| WW | 48 |
| YW | 88 |
| M | 34 |

COW

Consignor: **D&J MEADE FARM**

A TC Aberdeen 759 daughter bred at Double G Farms. These heifers weighed 1125 lbs at breeding. They are big, deep ribbed females. This heifer was bred on 11/28/12 to the Select Sires Bull G A R Ingenuity whose EPD's are BW +1.9 WW +64 YW +113 M +36, Docility +34. After 12/25/12, they were pasture exposed to HC Traveler 1152 H19, a Sydgen CC&7 son whose EPDs are +1.4 +47 +93 +37.

6 LUCAS LADY IMAGE MAKER T725S

HERO 6267 OF R R 2418
 H A IMAGE MAKER 0415
 H A RITO BLACKCAP 9038
 G A R GRID MAKER
 LUCAS LADY GRID MAKER T4S25
 V T EXT X72

DOB 9/25/07
 Tatt 725S
 Reg. 16001921

| | |
|----|----|
| BW | .4 |
| WW | 55 |
| YW | 97 |
| M | 21 |

COW

Consignor: **D&J MEADE FARM**

A H A Image Maker 0415 daughter. She produced one son who sold through a previous Double Header Sale and her past two bull calves have been sold private treaty from home. She has a heifer calf born 2/27/13 by G A R New Design 5050 whose EPD's are +.8 +56 +108 +39 \$B +99.23.



SYDGEN MANDATE 6079

7A DOUBLE G MISS KRUGERRAND 125

KRUGERRAND OF DONAMERE 490
 F A R KRUGERRAND 410H
 F A R ERIANNA 286F
 RITO 6I6 OF 4B20 6807
 UTP ERICA 1964
 U T P ERICA 2109

DOB 4/1/12
 Tatt 125
 Reg. 17306467

| | |
|----|------|
| BW | -1.1 |
| WW | 41 |
| YW | 84 |
| M | 14 |

COW

Consignor: **DOUBLE G FARM**

A daughter of the Genex bull F A R Krugerrand 410H out of a female sired by the Select Sires bull Rito 6I6 of 4B20 6807. A nice open heifer from Double G Farm. She has a \$B +73.65.



SYDGEN C C & 7

8A DOUBLE G MISS CONCRETE 1116

S S OBJECTIVE T510 OT26

DOB 10/2/11

G A R CONCRETE

Tatt 1116

CHAIR ROCK GRID MAKER 4047

Reg. 17198146

RITO 6I6 OF 4B20 6807

| | |
|----|-----|
| BW | 2.5 |
| WW | 56 |
| YW | 99 |
| M | 26 |

PA4D EILEEN OF 6I6 45B4

PA4D KATIE 3X17 45B1

COW

Consignor: **DOUBLE G FARM**

A daughter of the very popular G A R Concrete out of a dam sired by Rito 6I6 of 4B20 6807. Outstanding EPD's on this bred heifer from Double G Farm. Sells bred on 12/16/12 to Sitz Dillon 93Y whose EPD's are -3.0 +54 +101 +28 and \$B +75.47. Examined safe in calf due on 9/15/13.

7B DOUBLE G MISS CC&7 1120

S A F CONNECTION

DOB 12/9/11

SYDGEN C C & 7

Tatt 1120

SYDGEN FOREVER LADY 4087

Reg. 17241766

SITZ ALLIANCE 6595

| | |
|----|-----|
| BW | 1.4 |
| WW | 45 |
| YW | 89 |
| M | 32 |

WF MISS PETUNIA P04

GRAYSTONE PETUNIA 3896

COW

Consignor: **DOUBLE G FARM**

A daughter of the ABS Breed Leader SydGen C C & 7 out of a female from the Petunia cow family sired by Sitz Alliance 6595. Her twin sister sells as Lot 7C.

8B DOUBLE G MISS CONCRETE 1114

S S OBJECTIVE T510 OT26

DOB 9/20/11

G A R CONCRETE

Tatt 1114

CHAIR ROCK GRID MAKER 4047

Reg. 17198144

RITO 6I6 OF 4B20 6807

| | |
|----|-----|
| BW | 5.0 |
| WW | 53 |
| YW | 98 |
| M | 26 |

ECHO RIDGE MAGGIE 8662

ECHO RIDGE MAGGIE 6772

COW

Consignor: **DOUBLE G FARM**

A daughter of the very popular G A R Concrete out of a dam sired by Rito 6I6 of 4B20 6807. Outstanding EPD's on this bred heifer from Double G Farm. She has a \$B of +89.51. Sells bred on 12/28/12 to Sitz Dillon 93Y whose EPD's are -3.0 +54 +101 +28 and \$B +75.47. Examined safe in calf due 10/4/13.

7C DOUBLE G MISS CC&7 1119

S A F CONNECTION

DOB 12/9/11

SYDGEN C C & 7

Tatt 1119

SYDGEN FOREVER LADY 4087

Reg. 17241765

SITZ ALLIANCE 6595

| | |
|----|-----|
| BW | 1.4 |
| WW | 45 |
| YW | 89 |
| M | 32 |

WF MISS PETUNIA P04

GRAYSTONE PETUNIA 3896

COW

Consignor: **DOUBLE G FARM**

A daughter of the ABS Breed Leader SydGen C C & 7 out of a female from the Petunia cow family sired by Sitz Alliance 6595. Her twin sister sells as Lot 7B.

9A GAF OBJECTIVE FORWARD 1253

BOYD FORWARD 6025

DOB 4/29/12

GAF BOYD FORWARD 9058

Tatt 1253

G V F BLACKBIRD 6033

Reg. 17213230

S S OBJECTIVE T510 OT26

| | |
|----|-----|
| BW | 1.1 |
| WW | 59 |
| YW | 107 |
| M | 26 |

GAF OBJECTIVE 9044

JENNINGS RITO IDEAL

COW

Consignor: **GODSEY ANGUS FARM**

Great Birth to Yearling EPD spread in this Boyd Forward daughter with S S Objective influenced genetics. Sired by GAF Boyd Forward 9058 whose father is a Select Sires AI Stud. Calhhood vaccinated and ready to work in your herd.

9B **GAF BLACKBIRD FORWARD 1250**

BOYD FORWARD 6025 DOB 4/19/12
GAF BOYD FORWARD 9058 Tatt 1250
G V F BLACKBIRD 6033 Reg. 17213224
H A R B HIGH PLAINS 975 JH
H A R B BLACKBIRD 285 J H
H A R B BLACKBIRD G65 J H

| | |
|----|-----|
| BW | 1.4 |
| WW | 46 |
| YW | 86 |
| M | 32 |

COW

Consignor: **GODSEY ANGUS FARM**
 A well balanced and solid performing daughter of the calving ease Boyd Forward pedigree. Dam has been a standout on Godsey Angus herd with her having a 362 calving interval on 8 calves and ratio 108 weaning. Sired by GAF Boyd Forward 9058 whose father is a Select Sires AI Stud. Calfhood vaccinated and ready to work in your herd.

9C **GAF MISS BEXTOR FORWARD 1245**

BOYD FORWARD 6025 DOB 3/29/12
GAF BOYD FORWARD 9058 Tatt 1245
G V F BLACKBIRD 6033 Reg. 17213221
C R A BEXTOR 872 5205 608
GAF BAXTOR 9050
ABERLEA ELBA 46

| | |
|----|-----|
| BW | 1.5 |
| WW | 51 |
| YW | 99 |
| M | 25 |

COW

Consignor: **GODSEY ANGUS FARM**
 A very well made Boyd Forward daughter with a pedigree stacked for calving ease and maternal values. Sired by GAF Boyd Forward 9058 whose father is a Select Sires AI Stud. Calfhood vaccinated and ready to work in your herd.

10 **PA4D ERICA RITA 5027**

N BAR EMULATION EXT DOB 2/26/08
B A R EXT TRAVELER 205 Tatt 5027
B A R QUEEN TRAVELER 3015 Reg. 15996745
BOYD NEW DAY 8005
PA4D ERICA RITA 50JE
PA4D ERICA OF 616 50J2

| | |
|----|----|
| BW | .3 |
| WW | 37 |
| YW | 69 |
| M | 27 |

COW

Consignor: **HARR FARMS & CATTLE**
 A well bred easy keeping cow that has had 3 calves with a calving interval of 338 days. She is a daughter of Bar Ext Traveler 205, that goes back to Boyd New Day 8005 on her maternal side. Sells with a bull calf by B/R New Frontier 095 born 2/7/13 (BW 66 lbs). Bred 3/20/13 to EXAR Significant 1769 whose EPD's are +2.6 +63 +113 +23 due 12/25/13.

11 **GHS BLACK LASS T81 C24 9004**

V D A R LUCYS BOY DOB 10/11/07
CREEKSTONE LUCY BOY 9004 Tatt T81
O C C BLACKBIRD 833E Reg. 15988116
BOYD NEW DAY 8005
GHS BLACK LASS C24 OF 8005
P C 958 OF 774 5204

| | |
|----|-----|
| BW | 2.2 |
| WW | 36 |
| YW | 72 |
| M | 21 |

COW

Consignor: **HARR FARMS & CATTLE**
 Selling a nice bred cow that was bred at Stovall Livestock. She is a direct daughter of Creek Stone Lucy Boy 9004, while going back to the popular Boyd New Day 8005 on her maternal side. We are keeping her 8/17/12 born heifer as breeding stock. Bred 11/28/12 to the \$210,000 Conneally Consensus 7229 whose EPD's are +2.0 +67 +112 +14 due 9/4/13.

12 **SINCLAIR PRIDE 5MB19 2M2**

N BAR MODERATION 9955 DOB 4/4/05
N BAR MUSKETEER 2M13 Tatt 5MB19
N BAR CLOVA PRIDE E2188 Reg. 15008921
N BAR EMULATION EXT
N BAR PRIDE S C C 2M2
N BAR PRIDE A166

| | |
|----|----|
| BW | 0 |
| WW | 26 |
| YW | 52 |
| M | 15 |

COW

Consignor: **HARR FARMS & CATTLE**
 A very productive cow with lots of hard to come by foundation blood in her pedigree that we bought at a production sale at Sinclair Cattle Co. We have retained 3 of her daughters to use in our cow herd. She sells bred 12/6/12 to TC Total 410 whose EPD's are +3.6 +69 +124 +26 due 9/15/13.



N BAR EMULATION EXT



H A IMAGE MAKER 0415

13 HC MISS ELLUNA 75J12

HERO 6267 OF R R 2418

DOB 9/11/07

H A IMAGE MAKER 0415

Tatt 7512

H A RITO BLACKCAP 9038

Reg. 15996672

BOYD NEW DAY 8005

| | |
|----|-----|
| BW | 1.7 |
| WW | 54 |
| YW | 93 |
| M | 31 |

HC ELLUNA 5J12

V D A R ELLUNA 6150

COW

Consignor: **HAWKINSCREST FARM**

A royally bred female here sired by the proven ABS bull H A Image Maker 0415 out of a dam sired by the Genex Masterpiece sire Boyd New Day 8005 from the Elluna cow family. Outstanding EPD's on this proven producer. Sells with a 11/26/12 bull calf sired by Hoover Dam. Sells rebred 1/9/13 to Connealy Counselor whose EPD's are -.8 +56 +105 +29 \$B +92.38 then pasture exposed to H C Upward 107729, a son of Sitz Upward 307R seeing service in the Hawkinscrest herd.

14 HC BLACKBIRD 749J4

HYLINE RIGHT TIME 338

DOB 4/28/07

H C HYLINE 42J7

Tatt 7494

J E H RITA G43 OF D24

Reg. 16983854

BON VIEW NEW DESIGN 208

| | |
|----|----|
| BW | .8 |
| WW | 38 |
| YW | 64 |
| M | 23 |

H C MISS NEW DESIGN 49J4

H C MISS RITA OF 1418

COW

Consignor: **HAWKINSCREST FARM**

A granddaughter of two of the most proven bulls in the Angus breed, Hyline Right Time 338 and Bon View New Design 208. She is from the Blackbird cow family. Sells with a 11/20/12 bull calf sired by H C Identity 1086357 who is a son of Sitz Identity 2575. Sells rebred on 1/12/13 to SydGen C C & 7 whose EPD's are +1.0 +54 +109 +47 \$B +95.55. Sells pasture exposed to H C Upward 107729 whose EPD's are +1.9 +52 +101 +32.

15 HC RITA IN FOCUS 79J4

S A F FOCUS OF E R

DOB 4/22/07

MYTTY IN FOCUS

Tatt 79J4

MYTTY COUNTESS 906

Reg. 15835081

IDEAL 1418 OF 8103 4286

H C MISS RITA OF 1418

H C RITA OF SC1483 5R11

| | |
|----|-----|
| BW | 1.6 |
| WW | 48 |
| YW | 90 |
| M | 22 |

COW

Consignor: **HAWKINSCREST FARM**

A daughter of the proven ABS bull Mytty In Focus. Outstanding EPD's on this proven producer. Sells with a 10/23/12 heifer calf sired by H C Upward 1094B, a Sitz Upward 307R son. Sells rebred on 1/7/13 to Connealy Counselor and then pasture exposed to H C Upward 107729, a son of Sitz Upward 307R.

16 HC JESTRESS 779

HERO 6267 OF R R 2418

DOB 2/14/07

H A IMAGE MAKER 0415

Tatt 779

H A RITO BLACKCAP 9038

Reg. 16234315

BON VIEW NEW DESIGN 1407

B&J JESTRESS 79

WHITESTONE JESTRESS J088

| | |
|----|-----|
| BW | 1.2 |
| WW | 54 |
| YW | 94 |
| M | 33 |

COW

Consignor: **HAWKINSCREST FARM**

A daughter of the popular ABS bull H A Image Maker 0415 out of a dam from the Jestress cow family sired by Bon View New Design 1497. Outstanding EPD's on this proven producer. Sells with a 11/8/12 heifer calf sired by Basin Rainmaker P175 whose EPD's are +1.1 +68 +114 +20 \$B +85.73. Sells rebred on 1/13/13 to Sitz Rainmaker 11127 and then exposed to H C Upward 107729, a son of Sitz Upward 307R.

17 HC LASS 7122

SITZ ALLIANCE 6595

DOB 2/6/07

WAR ALLIANCE 9126 6006

Tatt 7122

WAR BANDO 6006 598 4053

Reg. 16897848

B C C BUSHWACKER 41-93

H C O LASS BUSHWACKER 122

V N A R O LASS 133D 80J

| | |
|----|-----|
| BW | 2.2 |
| WW | 54 |
| YW | 97 |
| M | 26 |

COW

Consignor: **HAWKINSCREST FARM**

A daughter of the Accelerated Genetics bull WAR Alliance 9126 6006 out of a dam from the Lass cow family sired by the Genex Masterpiece sire B C C Bushwacker 41-93. Outstanding EPD's on this proven producer. Sells with a 12/25/12 heifer calf by the Genex bull S A V Priority 7283 whose EPD's are -.8 +71 +116 +32. Sells rebred on 3/11/13 to Connealy Counselor whose EPD's are -.8 +56 +105 +29 \$B +92.38.

18 HC MISS SPECIAL DESIGN 72J7

BON VIEW NEW DESIGN 878
W C C SPECIAL DESIGN L309
N BAR PRIMROSE 2424
B C C BUSHWACKER 41-93
H C O LASS BUSHWACKER 122
V N A R O LASS 133D 80J

DOB 1/24/07
Tatt 72J7
Reg. 15999143

| | |
|----|-----|
| BW | 3.4 |
| WW | 50 |
| YW | 86 |
| M | 22 |

COW



Consignor: **HAWKINSCREST FARM**

A daughter of Special Design out of a dam from the Lass cow family sired by the Genex Masterpiece sire B C C Bushwacker 41-93. Sells with a 10/26/12 heifer calf sired by H A Image Maker 0415. Sells rebred on 1/2/13 to LLF Validation whose EPD's are +.4 +74 +133 +38 \$B +84.43 then pasture exposed to H C Upward 107729, a son of Sitz Upward 307R

W C C SPECIAL DESIGN L309

19 HC MISS DATELINE DESIGN 62H3

BON VIEW NEW DESIGN 878
W C C SPECIAL DESIGN L309
N BAR PRIMROSE 2424
CONNELLY DATELINE
H C MISS DATELINE
H N SKY LUCY 452

DOB 10/29/06
Tatt 623
Reg. 15999139

| | |
|----|-----|
| BW | 3.0 |
| WW | 43 |
| YW | 77 |
| M | 19 |

COW

21 HC BUSHWACKER LASS 625A

PARAMONT AMBUSH 2172
B C C BUSHWACKER 41-93
R C ANITA T BANDO 918903
V D A R LUCYS BOY
V N A R O LASS 133D 80J
V N A R O LASS4122-133D

DOB 5/17/06
Tatt 625A
Reg. 15701012

| | |
|----|-----|
| BW | 3.1 |
| WW | 43 |
| YW | 73 |
| M | 24 |

COW

Consignor: **HAWKINSCREST FARM**

Another daughter of the Genex sire W C C Special Design L309 out of a female from the Finks Foxy Lucy cow family. Sells with a bull calf born 11/30/12 sired by Basin Payweight 1075 whose EPD's are +3.0 +85 +135 +20. Sells rebred on 3/11/13 to Connealy Counselor and then pasture exposed to H C Upward 107729.

Consignor: **HAWKINSCREST FARM**

A daughter of the Genex Masterpiece sire B C C Bushwacker 41-93 out of a dam from the Lass cow family sired by V D A R Lucy Boy. Sells with a heifer calf born 3/4/13 sired by Connealy Consensus 7229 whose EPD's are +2.0 +67 +112 +13 \$B +98.28.

20 HC MISS BECKY DESIGN 62J15

BON VIEW NEW DESIGN 878
W C C SPECIAL DESIGN L309
N BAR PRIMROSE 2424
BT RIGHT TIME 24J
KA BECKY 3006
K A BECKY 806

DOB 10/24/06
Tatt 6215
Reg. 15999149

| | |
|----|-----|
| BW | 1.6 |
| WW | 45 |
| YW | 87 |
| M | 21 |

COW



Consignor: **HAWKINSCREST FARM**

A daughter of the Genex bull W C C Special Design L309 out of a dam sired by the Accelerated Genetics bull BT Right Time 24J who is known as the "Cowmaker" bull. Sells with a 12/8/12 bull calf sired by HC Upward 1094B. Sells rebred on 1/28/13 to LLF Validation whose EPD's are +.4 +74 +133 +38 \$B +84.43. Pasture exposed to H C Upward 107729 whose EPD's are +1.9 +52 +101 +32.

B C C BUSHWACKER 41-93

22 **HC POWERHOUSE PRIDE 6299**

VERMILION DATELINE 7078
 MILL BAR POWERHOUSE VRD 2676
 MILL BAR ERICA 1490
 LEACHMAN EXPLOIT
 N F C PRIDE J631
 SITZ PRIDE 3645

DOB 4/17/06
 Tatt 6299
 Reg. 15700342

| | |
|----|-----|
| BW | 2.3 |
| WW | 49 |
| YW | 89 |
| M | 10 |

COW

Consignor: **HAWKINSCREST FARM**

A daughter of the senior herd sire at Hawkinscrest, Mill Bar Powerhouse VRD 2676 and her dam is from the Sitz Pride cow family. Sells with a bull calf born 12/29/12 sired by HC Identity 1086357 whose EPD's are +2.1 +48 +98 +26. Sells rebred on 3/2/13 to SydGen C C & 7 then pasture exposed to HC Upward 1094B.

23 **HC EVERELDA ENTENSE 62R35**

BON VIEW BANDO 598
 B&J BANDO 21F
 BT EVERELDA ENTENSE 76D
 ROCKN D AMBUSH 1531
 H C MISS AMBUSH 2R35
 V N A R O LASS 133D 80J

DOB 3/26/06
 Tatt 6235
 Reg. 15461923

| | |
|----|----|
| BW | .4 |
| WW | 35 |
| YW | 69 |
| M | 22 |

COW

Consignor: **HAWKINSCREST FARM**

A granddaughter of two popular Angus bulls, Bon View Bando 598 and Rockn D Ambush 1531. Her dam is from the Lass cow family. Sells with a bull calf 10/7/12 sired by Sitz Upward 307R. Sells rebred on 1/7/13 to Sitz Rainmaker 1127 then pasture exposed to H C Upward 107729 whose EPD's are +1.9 +52 +101 +32.



B C MATRIX 4132

24A **LRAF BEULAH 012**

B C MATRIX 4132
 LAWS MATRIX X170
 ROF ARCHITECT STYLISH RITA
 G A R EXPECTATION 4915
 LRAF BEULAH 109
 LRAF BEULAH 203

DOB 7/4/12
 Tatt 012
 Reg. 17306247

| | |
|----|-----|
| BW | 2.8 |
| WW | 45 |
| YW | 85 |
| M | 22 |

COW

Consignor: **LIGHTNING RIDGE ANGUS FARM**

The youngest of the three heifers here. Out of the Laws Matrix X170 and an own daughter of the famed female maker GAR Expectation 4915. This young heifer's pedigree is loaded with cow making bulls. And she has solid functional EPD's.

24B **LRAF RENE 912**

B C MATRIX 4132
 LAWS MATRIX X170
 ROF ARCHITECT STYLISH RITA
 SITZ ALLIANCE 6595
 LRAF RENE 209
 LRAF RENE 206

DOB 6/28/12
 Tatt 912
 Reg. 17306246

| | |
|----|-----|
| BW | 2.7 |
| WW | 45 |
| YW | 82 |
| M | 23 |

COW

Consignor: **LIGHTNING RIDGE ANGUS FARM**

One of three young open heifers from Lightning Rige Angus Farm. She is a daughter of the Laws Matrix X170 and out of an own daughter of Sitz Alliance 6595. Excellent EPD's across the board. Will mature into a top cow.

24C **LRAF BEROSA 612**

B C MATRIX 4132
 LAWS MATRIX X170
 ROF ARCHITECT STYLISH RITA
 BOYD NEW DAY 8005
 GRAYSTONE BEROSA 945
 GRAYSTONE BEROSA 9499

DOB 5/23/12
 Tatt 612
 Reg. 17306249

| | |
|----|-----|
| BW | 2.5 |
| WW | 43 |
| YW | 82 |
| M | 21 |

COW

Consignor: **LIGHTNING RIDGE ANGUS FARM**

The oldest of the three but still just a youngster. Out of the Laws Matrix X170 and a Boyd New Day 8005 cow. These three half sisters all have great potential and come from generations of top pedigreed sires and dams. All three of these young females would be just right to start into a fall calving program.



LUCAS LADY VT OBJ 141A

S S OBJECTIVE T510 OT26

DOB 4/1/11

VT OBJECTIVE DAF 802

Tatt 141A

VT 208 NEW DESIGN B36

Reg. 16891712

QUAKER HILL OBJECTIVE 3J15

| | |
|----|-----|
| BW | 2.0 |
| WW | 62 |
| YW | 110 |
| M | 29 |

LUCAS LADY OBJ 3J15 811J

LUCAS LADY GRID MAKER 4S28

COW

Consignor: **LUCAS FARM**

A very solid daughter of the VT Objective DAF 802 bull whose dam is sired by the Genex bull Quaker Hill Objective 3J15. She has a big EPD spread of 2 at birth to 110 at a year. She performed very well with a WR of 104 and a YR of 106. She sells pasture exposed to KCF Bennett Quality from 1/13/13 until 2/28/13 then exposed from 3/11/13 to sale time to KCF Bennett Absolute, the lead off bull of the 2012 Knoll Crest sale.



LUCAS LADY REFLECTION 122F

BON VIEW NEW DESIGN 878

DOB 2/11/11

CONNELY REFLECTION

Tatt 122F

HAPPY GRILL OF CONANGA 6260

Reg. 16924937

G A R RETAIL PRODUCT

| | |
|----|-----|
| BW | 2.1 |
| WW | 53 |
| YW | 97 |
| M | 29 |

LUCAS LADY RP 653N

LUCAS LADY ROCK ON 3F14

COW

Consignor: **LUCAS FARM**

A daughter of the Accelerated Genetics bull Connealy Reflection whose a proven calving ease bull and his daughters make really great cows. The heifer's dam is sired by the Select Sires bull Retail Product. 122F has a solid set of EPD's backed by a proven pedigree. She sells bred on 1/9/13 to GAR Prophet then pasture exposed to KCF Bennett Quality W445 from 1/13/13 until 2/28/13.



CONNELY REFLECTION



LUCAS LADY UPWARD W538 183N

SITZ UPWARD 307R

DOB 11/20/11

K C F BENNETT UPWARD W538

Tatt 183N

K C F MISS RETAIL PROD S480

Reg. 17430685

K C F BENNETT 6595 M338

| | |
|----|-----|
| BW | 1.9 |
| WW | 51 |
| YW | 100 |
| M | 31 |

LUCAS LADY KCF 6595 66J

LUCAS LADY 2F12 F2

COW

Consignor: **LUCAS FARM**

This is the first opportunity to purchase a bred heifer sired by KCF Bennett Upward W538, the high selling bull of the 2010 Knoll Crest sale. 183N's dam produced the co-high selling bull in the December 2011 SWVA's Finest sale at \$4,400. 183N is powerful and thick with a hard to beat set of EPD's. She sells bred on 12/19/12 to Connealy In Sure then pasture exposed from 1/13/13 until 2/28/13 to KCF Bennett Quality whose EPD's are +13 -1.7 +46 +93 +32.



LUCAS LADY IMPRESSION T1660

CONNELY REFLECTION

DOB 10/11/11

CONNELY IMPRESSION

Tatt 1660

PEARL PAMMY OF CONANGA 194

Reg. 17204058

H A IMAGE MAKER 0415

| | |
|----|-----|
| BW | 1.6 |
| WW | 56 |
| YW | 95 |
| M | 30 |

LUCAS LADY IMAGE MAKER T96J

LUCAS LADY RIGHT WAY T659N

COW

Consignor: **LUCAS FARM**

A bred heifer sired by the ABS bull Connealy Impression and out of a heavy milking HA Image Maker 0415 dam. This heifer has a very solid set of EPD's and, just like her sire's name, she will leave a good "Impression". She sells bred on 12/19/12 to GAR Prophet then exposed from 1/13/13 until 2/28/13 to the true calving ease bull KCF Bennett Quality.



LUCAS LADY PENDLETON 013J

S A V FINAL ANSWER 0035

DOB 1/22/10

HARB PENDLETON 765 J H

Tatt 013J

H A R B BLACK LADY 375 J H

Reg. 16660709

HYLINE RIGHT WAY 781

| | |
|----|-----|
| BW | 2.4 |
| WW | 53 |
| YW | 95 |
| M | 26 |

LUCAS LADY RIGHT WAY T659N

LUCAS LADY 6I6 0J4

COW

Consignor: **LUCAS FARM**

A first calf heifer sired by the Genex bull HARB Pendleton. This young female is really nice. She is a big and powerful cow with a bright future ahead of her. She posted individual ratios of 102 at weaning and 106 at a year. Her bull calf was born 9/18/12 and is sired by SydGen Mandate, the low birth weight, high growth ABS sire. T257S had a birth weight of 67 lbs and will make a nice herd sire. 013J sells bred back to the high selling bull of the 2010 Knoll Crest Bull Sale, KCF Bennett Upward W538 exposed from 12/22/12 until 2/28/13 and examined safe.



S A V FINAL ANSWER 0035

28 LUCAS LADY FINAL ANSWER 8360

SITZ TRAVELER 8180 DOB 10/6/08
S A V FINAL ANSWER 0035 Tatt 8360
S A V EMULOUS 8145 Reg. 16300384
K C F BENNETT 6595 M338
LUCAS LADY KCF 6595 5MA27
LUCAS LADY HHF 1418 1M12

| | |
|----|----|
| BW | .5 |
| WW | 49 |
| YW | 84 |
| M | 23 |

COW

Consignor: LUCAS FARM

A nice young low birth weight cow sired by the legendary S A V Final Answer 0035. Her dam has been a solid producer for us by always producing one of our top fall calves. 8360's progeny record is 2-103 BWR 2-95 WWR 2-95 YWR. She sells with a bull calf at side born 3/17/13 to KCF Bennett Upward W538 whose EPD's are +2.2 +66 +127 +38 \$B 99.5.

29 LUCAS LADY 2V1 661N

BON VIEW NEW DESIGN 1407 DOB 11/27/06
RITO 2V1 OF 2536 1407 Tatt 661N
G A R PRECISION 2536 Reg. 15678897
S A F 598 BANDO 5175
LUCAS LADY 3F10 OF 5175
LUCAS PRINCESS 2B 7F4

| | |
|----|-----|
| BW | 4.2 |
| WW | 56 |
| YW | 93 |
| M | 21 |

COW

Consignor: LUCAS FARM

A powerful cow sired by 2V1 out of a Bando 5175 dam. 661N posted individual ratios of 120 at weaning and a 104 at a year. She has a \$B of 80 and her 2012 bull calf had a IMF ratio of 149 and a ribeye of 105. She sells with a bull calf at side born 2/1/13 (BW 82 lbs) sired by the up and coming Genex bull S A V Priority. Sells open and ready to breed.

30A LYN LEW ROSEVERA L82

MYTTY IN FOCUS DOB 5/6/12
S S FAST TRACK M719 Tatt L82
S S MISS OBJECTIVE 0T26 5J5 Reg. 17483827
H S A F BANDO 1961
LYN LEW ROSEVERA 39L
LYN LEW ROSEVERA 72L

| | |
|----|-----|
| BW | 1.7 |
| WW | 55 |
| YW | 95 |
| M | 26 |

COW

Consignor: LYN-LEW FARM

L82 had an actual birth weight of 78 lbs, a 205 day adjusted weaning weight of 632 lbs, a 365 day adjusted yearling weight of 1,007 lbs and a yearling frame score of 6.1. She is sired by the Accelerated Genetics Mytty In Focus son S S Fast Track M719 whose EPD's are +.4 +60 +106 +32. He has a maternal ratio of 103 on 14 daughters.

30B LYN LEW ERICA L72

MYTTY IN FOCUS DOB 4/6/12
S S FAST TRACK M719 Tatt L72
S S MISS OBJECTIVE 0T26 5J5 Reg. 17483826
B/R NEW FRONTIER 095
LYN LEW ERICA 58L
LYN LEW ERICA 13L

| | |
|----|-----|
| BW | 2.4 |
| WW | 53 |
| YW | 97 |
| M | 27 |

COW

Consignor: LYN-LEW FARM

L72 had an actual birth weight of 81 lbs, a 205 day adjusted weaning weight of 651 lbs, a 365 day adjusted yearling weight of 1,015 lbs and a yearling frame score of 6.0. She is sired by the Accelerated Genetics Mytty In Focus son S S Fast Track M719 whose EPD's are +.4 +60 +106 +32. He has a maternal ratio of 103 on 14 daughters.

30C LYN LEW ERICA L62

MYTTY IN FOCUS DOB 3/7/12
S S FAST TRACK M719 Tatt L62
S S MISS OBJECTIVE 0T26 5J5 Reg. 17483825
S A V BISMARCK 5682
LYN LEW ERICA 30L
LYN LEW ERICA 18L

| | |
|----|-----|
| BW | .6 |
| WW | 60 |
| YW | 106 |
| M | 29 |

COW

Consignor: LYN-LEW FARM

L62 had an actual birth weight of 70 lbs, a 205 day adjusted weaning weight of 682 lbs, a 365 day adjusted yearling weight of 1,042 lbs and a yearling frame score of 6.1. She is sired by the Accelerated Genetics Mytty In Focus son S S Fast Track M719 whose EPD's are +.4 +60 +106 +32. He has a maternal ratio of 103 on 14 daughters.



S S FAST TRACK M719

31A LYN LEW ERICA L52

MYTTY IN FOCUS

DOB 2/11/12

S S FAST TRACK M719

Tatt L52

S S MISS OBJECTIVE 0T26 5J5

Reg. 17483824

IC BOOM TIME 434

| | |
|----|-----|
| BW | 2.0 |
| WW | 58 |
| YW | 103 |
| M | 32 |

LYN LEW ERICA 20L

LYN LEW ERICA 56L

COW

Consignor: **LYN-LEW FARM**

L52 had an actual birth weight of 77 lbs, a 205 day adjusted weaning weight of 698 lbs, a 365 day adjusted yearling weight of 1,063 lbs and a yearling frame score of 6.4. She is sired by the Accelerated Genetics Mytty In Focus son S S Fast Track M719 whose EPD's are +.4 +60 +106 +32. He has a maternal ratio of 103 on 14 daughters.

31B LYN LEW ERICA L42

MYTTY IN FOCUS

DOB 2/1/12

S S FAST TRACK M719

Tatt L42

S S MISS OBJECTIVE 0T26 5J5

Reg. 17483823

SITZ NEW DESIGN 458N

| | |
|----|-----|
| BW | 1.7 |
| WW | 54 |
| YW | 101 |
| M | 31 |

LYN LEW ERICA 79L

LYN LEW ERICA 54L

COW

Consignor: **LYN-LEW FARM**

L42 had an actual birth weight of 75 lbs, a 205 day adjusted weaning weight of 633 lbs, a 365 day adjusted yearling weight of 990 lbs and a yearling frame score of 6.7. She is sired by the Accelerated Genetics Mytty In Focus son S S Fast Track M719 whose EPD's are +.4 +60 +106 +32. He has a maternal ratio of 103 on 14 daughters.

32A LYN LEW ERICA L32

MYTTY IN FOCUS

DOB 1/24/12

S S FAST TRACK M719

Tatt L32

S S MISS OBJECTIVE 0T26 5J5

Reg. 17483822

H S A F BANDO 1961

LYN LEW ERICA 18L

LYN LEW ERICA 74L

| | |
|----|-----|
| BW | 1.2 |
| WW | 51 |
| YW | 96 |
| M | 28 |

COW

Consignor: **LYN-LEW FARM**

L32 had an actual birth weight of 77 lbs, a 205 day adjusted weaning weight of 599 lbs, a 365 day adjusted yearling weight of 956 lbs and a yearling frame score of 6.0. She is sired by the Accelerated Genetics Mytty In Focus son S S Fast Track M719 whose EPD's are +.4 +60 +106 +32. He has a maternal ratio of 103 on 14 daughters.

32B LYN LEW ROSEVERA L12

MYTTY IN FOCUS

DOB 1/7/12

S S FAST TRACK M719

Tatt L12

S S MISS OBJECTIVE 0T26 5J5

Reg. 17483821

H S A F BANDO 1961

LYN LEW ROSEVERA 08L

LYN LEW ROSEVERA 64L

| | |
|----|-----|
| BW | 1.3 |
| WW | 56 |
| YW | 98 |
| M | 30 |

COW

Consignor: **LYN-LEW FARM**

L12 had an actual birth weight of 78 lbs, a 205 day adjusted weaning weight of 674 lbs, a 365 day adjusted yearling weight of 996 lbs and a yearling frame score of 6.2. She is sired by the Accelerated Genetics Mytty In Focus son S S Fast Track M719 whose EPD's are +.4 +60 +106 +32. He has a maternal ratio of 103 on 14 daughters. Her dam is a 5 year old Pathfinder.

33 M A F 12W8

SITZ ALLIANCE 6595

DOB 10/10/11

WAR ALLIANCE 9126 6006

Tatt 1208

WAR BANDO 6006 598 4053

Reg. 17078423

QUAKER HILL OBJECTIVE 3J15

M A F 8J9

M A F 027

| | |
|----|-----|
| BW | 1.5 |
| WW | 63 |
| YW | 113 |
| M | 29 |

COW

Consignor: **MULLINS ANGUS FARM**

A nice bred heifer from Mullins Angus Farm. Outstanding EPD's on this young female who has a \$B +73.53. Sells bred to M A F 11016 a son of M C C Daybreak whose EPD's are +.1 +59 +105 +28.



PMA 115

S S TRAVELER 6807 T510
S S OBJECTIVE T510 OT26
S S MISS RITA R011 7R8
TC TOTAL 410
RITA 8H87 OF RITA 3B7 TOTAL
RITA 3B7 OF 2536 BW

DOB 12/25/09
Tatt P115
Reg. 16884513

| | |
|----|-----|
| BW | 3.4 |
| WW | 63 |
| YW | 112 |
| M | 29 |

COW

Consignor: **MULLINS ANGUS FARM**

A young female sired by the ABS Global proven breed leader S S Objective T510 OT26 out of a cow bred in the Wehrmann Angus herd. Outstanding EPD's on this female who has a \$B +74.09. Sells with a 10/12/12 bull calf sired by MAF 11D16 whose EPD's are +.1 +59 +105 +28. Sells bred to S A F Focus of E R on 3/19/13.



MAF 6D12

B/R NEW DESIGN 036
BON VIEW NEW DESIGN 208
BON VIEW ERICA 443
SITZ ALLIANCE 6595
MAF 4A7
W L C QUEEN MOTHER 341 629

DOB 10/21/05
Tatt 612
Reg. 15118825

| | |
|----|-----|
| BW | 1.1 |
| WW | 42 |
| YW | 78 |
| M | 36 |

COW

Consignor: **MULLINS ANGUS FARM**

A daughter of the Select Sires maternal specialist Bon View New Design 208. A proven producer who sells with a 12/30/12 heifer calf sired by HARB Pendleton 765 J H. Sells bred to WMR Timeless on 3/22/13.



MAF 4T15

CONNELY DATELINE
CONNELY LEADTIME
RUTHA RONA OF CONANGA
SITZ ALLIANCE 6595
MISS G A A F 8D29
MISS G A A F 5117 8D29

DOB 12/26/03
Tatt 415
Reg. 14815670

| | |
|----|-----|
| BW | 2.5 |
| WW | 53 |
| YW | 98 |
| M | 33 |

COW

Consignor: **MULLINS ANGUS FARM**

A female sired by Connealy Leadtime out of a dam sired by the breed legend Sitz Alliance 6595. A proven producer from Mullins Angus Farm. Outstanding EPD's on this female. Sells pasture exposed to M A F 11016 whose EPD's are +.1 +59 +105 +28. Five months safe in calf.



JO T361 SKYMERE 242

JAUER 353 TRAVELER 589 27
K C F BENNETT 589 T361
K C F MISS 1407 M262
H S A F BANDO 1961
OC BANDO'S NEW DESIGN
ABSOLUTE SKYMERE 878-P414

DOB 3/4/12
Tatt 242
Reg. 17309543

| | |
|----|-----|
| BW | 2.3 |
| WW | 43 |
| YW | 85 |
| M | 25 |

COW

Consignor: **OSBORNE LIVESTOCK**

A daughter of the T361 bull that Fred Williams and James Osborne bought at Knoll Crest Farm. These open heifers meet the requirements of Virginia Premium Assured Heifer Program. They were vaccinated with modified live and calthood vaccinated in the fall. They were worked again and dewormed this spring. They are repro-tracted scored, pelvic measured, and PI free. A shot of Lutalyse on 4/30/13 will complete their breeding protocol. You can then either heat detect and AI, use timed AI or turn with the bull. They averaged 850 on 3/20/13.



JO T361 PETUNIA 239

JAUER 353 TRAVELER 589 27
K C F BENNETT 589 T361
K C F MISS 1407 M262
K C F BENNETT ARCHITECT M299
GRAYSTONE PETUNIA 697
GRAYSTONE PETUNIA 155

DOB 2/17/12
Tatt 239
Reg. 17309539

| | |
|----|------|
| BW | -1.3 |
| WW | 40 |
| YW | 82 |
| M | 24 |

COW

Consignor: **OSBORNE LIVESTOCK**

A daughter of the T361 bull from the Petunia cow family. These open heifers meet the requirements of Virginia Premium Assured Heifer Program. They were vaccinated with modified live and calthood vaccinated in the fall. They were worked again and dewormed this spring. They are repro-tracted scored, pelvic measured, and PI free. A shot of Lutalyse on 4/30/13 will complete their breeding protocol. You can then either heat detect and AI, use timed AI or turn with the bull. They averaged 850 on 3/20/13.



SITZ ALLIANCE 6595

37C J O T361 EUROTIA 238

JAUER 353 TRAVELER 589 27

DOB 2/13/12

K C F BENNETT 589 T361

Tatt 238

K C F MISS 1407 M262

Reg. 17309537

DEBUSK NEW DESIGN 2118

| | |
|----|-----|
| BW | 2.5 |
| WW | 38 |
| YW | 77 |
| M | 25 |

I O 2118 EUROTIA 612

STONE GATE EUROTIA 1532

COW

Consignor: OSBORNE LIVESTOCK

Another daughter of the T361 bull from the Stone Gate Eurotia cow family. These open heifers meet the requirements of Virginia Premium Assured Heifer Program. They were vaccinated with modified live and calfhooed vaccinated in the fall. They were worked again and dewormed this spring. They are repro-tracted scored, pelvic measured, and PI free. A shot of Lutalyse on 4/30/13 will complete their breeding protocol. You can then either heat detect and AI, use timed AI or turn with the bull. They averaged 850 on 3/20/13.



SITZ DASH 10277

38A HO FT ERICA 244

MYTTY IN FOCUS

DOB 2/7/12

S S FAST TRACK M719

Tatt 244

S S MISS OBJECTIVE 0T26 5J5

Reg. 17336888

IC BOOM TIME 434

| | |
|----|----|
| BW | .7 |
| WW | 53 |
| YW | 95 |
| M | 30 |

LYN LEW ERICA 09L

LYN LEW ERICA 74L

COW

Consignor: OSBORNE LIVESTOCK

A daughter of the Accelerated Genetics bull S S Fast Track M719 from the Erica cow family. These open heifers meet the requirements of Virginia Premium Assured Heifer Program. They were vaccinated with modified live and calfhooed vaccinated in the fall. They were worked again and dewormed this spring. They are repro-tracted scored, pelvic measured, and PI free. A shot of Lutalyse on 4/30/13 will complete their breeding protocol. You can then either heat detect and AI, use timed AI or turn with the bull. They averaged 850 on 3/20/13. Great EPD's on this open heifer.

38B J O BEROSA 234

SITZ UPWARD 307R

DOB 2/7/12

SITZ DASH 10277

Tatt 234

SITZ EVERELDA ENTENSE 2665

Reg. 17314597

S A V 8180 TRAVELER 004

| | |
|----|-----|
| BW | 2.5 |
| WW | 53 |
| YW | 92 |
| M | 26 |

GRAYSTONE BEROSA 370

GRAYSTONE BEROSA 943

COW

Consignor: OSBORNE LIVESTOCK

A daughter of the Accelerated Genetics bull Sitz Dash 10277 out of a female from the Berosa cow family. Great EPD's on this female. These open heifers meet the requirements of Virginia Premium Assured Heifer Program. They were vaccinated with modified live and calfhooed vaccinated in the fall. They were worked again and dewormed this spring. They are repro-tracted scored, pelvic measured, and PI free. A shot of Lutalyse on 4/30/13 will complete their breeding protocol. You can then either heat detect and AI, use timed AI or turn with the bull. They averaged 850 on 3/20/13.



TC Total 410

38C J O 410 ENVIOUS PRIDE 233

BON VIEW NEW DESIGN 208

DOB 2/6/12

TC TOTAL 410

Tatt 233

TC ERICA EILEEN 2047

Reg. 17309544

G V F NEW DESIGN 6071

| | |
|----|-----|
| BW | 1.4 |
| WW | 51 |
| YW | 97 |
| M | 21 |

I O 6071 ENVIOUS PRIDE 927

JO 1148 ENVIOUS PRIDE 315

COW

Consignor: OSBORNE LIVESTOCK

A daughter of the Select Sires breed leader TC Total 410. Outstanding EPD's on this female. These open heifers meet the requirements of Virginia Premium Assured Heifer Program. They were vaccinated with modified live and calfhooed vaccinated in the fall. They were worked again and dewormed this spring. They are repro-tracted scored, pelvic measured, and PI free. A shot of Lutalyse on 4/30/13 will complete their breeding protocol. You can then either heat detect and AI, use timed AI or turn with the bull. They averaged 850 on 3/20/13.



TC ABERDEEN 759



PVF MISS ABERDEEN 224

C R A BEXTOR 872 5205 608

DOB 9/16/11

TC ABERDEEN 759

Tatt 224

TC BLACKBIRD 4034

Reg. 17201093

DOUBLE G ENHANSER 8662 E16

DGF G22 OF 541-ENHANCER E16

GRAYSTONE BLACKBIRD 541

| | |
|----|-----|
| BW | 2.3 |
| WW | 50 |
| YW | 93 |
| M | 30 |

COW

POOR VALLEY FARM

Consignor: A daughter of the popular Genex bull TC Aberdeen 759 out of a dam from the Blackbird cow family. Outstanding EPD's on this bred heifer. Sells bred on 1/16/13 to Sitz Dillon 93Y whose EPD's are -3.0 +54 +101 +28. Pasture exposed to WDB Mr. Bismarck 729 199 from 2/1/13 until sale date.



PVF ABERDEEN 1124

C R A BEXTOR 872 5205 608

DOB 11/24/11

TC ABERDEEN 759

Tatt 1124

TC BLACKBIRD 4034

Reg. 17242361

CONNELY THUNDER

PVF THUNDER 9117

LAZY ACRES BEAUTY BELL 6114

| | |
|----|-----|
| BW | -.6 |
| WW | 50 |
| YW | 94 |
| M | 38 |

COW

POOR VALLEY FARM

Consignor: A daughter of the popular Genex bull TC Aberdeen 759 out of a Connealy Thunder daughter from the Beauty cow family. Outstanding EPD's on this bred heifer. Sells bred on 1/13/13 to Rito 9M25 of Rita 5F56 Pred whose EPD's are +1.4 +63 +105 +29. Examined safe.



PVF MISS PENDLETON 9464

S A V FINAL ANSWER 0035

DOB 9/5/11

HARB PENDLETON 765 J H

Tatt 9464

H A R B BLACK LADY 375 J H

Reg. 17201092

HYLINE RIGHT TIME 338

GRAYSTONE BEROSA 946

GRAYSTONE BEROSA 9499

| | |
|----|----|
| BW | .8 |
| WW | 48 |
| YW | 90 |
| M | 28 |

COW

POOR VALLEY FARM

Consignor: A daughter of the Genex bull HARB Pendleton 765 J H out of a dam from the Berosa cow family that is sired by Hyline Right Time 338. Sells bred to Rito 9M25 of Rita 5F56 Pred on 1/6/13. Pasture exposed to WDB Mr. Bismarck 729 199 whose EPD's are +1.6 +57 +98 +21 from 2/1/13 until sale date.



PVF ABERDEEN 184

C R A BEXTOR 872 5205 608

DOB 10/5/11

TC ABERDEEN 759

Tatt 184

TC BLACKBIRD 4034

Reg. 17201094

GRAYSTONE T510 184

D G F G18 OF 253-T510 184

RX PRIMROSE 253

| | |
|----|-----|
| BW | 1.0 |
| WW | 45 |
| YW | 87 |
| M | 31 |

COW

POOR VALLEY FARM

Consignor: Another daughter of the Genex bull TC Aberdeen 759 out of a cow from the Primrose cow family. Sells bred on 1/19/13 to WHS Limelight 64V whose EPD's are +1.2 +71 +130 +34. Examined safe.



PVF TOTAL 44

BON VIEW NEW DESIGN 208

DOB 11/4/11

TC TOTAL 410

Tatt 44

TC ERICA EILEEN 2047

Reg. 17242358

GRAYSTONE T510 184

D G F H4 OF 805-T510 184

Y A F MISTY OF W W 725

| | |
|----|-----|
| BW | 3.2 |
| WW | 50 |
| YW | 92 |
| M | 23 |

COW

POOR VALLEY FARM

Consignor: A daughter of the popular Select Sires bull TC Total 410. Outstanding EPD's on this bred heifer. She has a \$B +72.06. Sells bred on 1/6/13 to Sitz Dillon 93Y whose EPD's are -3.0 +54 +101 +28. Examined safe.



PVF BISMARCK 643

G A R GRID MAKER

DOB 2/17/11

Tatt 643

Reg. 16978479

S A V BISMARCK 5682

S A V ABIGALE 0451

RV LUCKY TRAVELER 8180

RV LUCKY GIBB ILLINI

RV ROCKN MS ILLINI

| | |
|----|-----|
| BW | 1.7 |
| WW | 45 |
| YW | 87 |
| M | 21 |

COW

Consignor: **POOR VALLEY FARM**

A daughter of the popular Genex bull S A V Bismarck 5682 out of a female bred in the Rhea Valley Angus herd in Meadowview. Sells bred on 12/4/12 to Rito 9M25 of Rita 5F56 Pred whose EPD's are +1.4 +63 +105 +29. Examined safe.



S A V BISMARCK 5682



D G F G19 OF 303-T510-184

S S TRAVELER 6807 T510

DOB 5/21/06

Tatt G19

Reg. 15602490

GRAYSTONE T510 184

GRAYSTONE EULIMA 402

LEACHMAN SAUGAHATCHEE 3000C

RX PRIDE 303

G V F PRIDE 7072

| | |
|----|----|
| BW | .6 |
| WW | 37 |
| YW | 73 |
| M | 25 |

COW

Consignor: **POOR VALLEY FARM**

A female bred in the Double G herd. She is sired by Graystone T510 184 who left many good daughters in the herd. She descends from the Pride cow family. Has a 9/12/12 bull calf (BW 84 lbs) sired by GAR Concrete whose EPD's are +4.7 +73 +121 +29 \$B +101.92. Bred back to GAR Concrete on 11/15/12. Examined safe.



CHAMPION HILL ELBA 7358

S A V 8180 TRAVELER 004

DOB 9/4/09

Tatt 7358

Reg. 16502886

S A V NEI WORTH 4200

S A V MAY 2410

S A F 598 BANDO 5175

CHAMPION HILL ELBA 5297

S A V ELBA 7099

| | |
|----|-----|
| BW | 4.0 |
| WW | 52 |
| YW | 98 |
| M | 31 |

COW

Consignor: **RX ANGUS**

Former show heifer. Many times a class winner for Michael. Has a fancy 9/3/12 heifer calf sired by SAV Bismarck 5682 (BW 60 lbs) who could be destined for the show ring as well. Rebred 1/29/13 to Connealy Final Product. Pasture exposed after 3/1/13 to Champion Hill Bismarck.



S A F 598 BANDO 5175



RX EVERELDA ENTENSE 68H

BON VIEW BANDO 598

DOB 3/9/08

Tatt 68H

Reg. 16211992

S A F 598 BANDO 5175

S A F ROYAL LASS 1002

N BAR EMULATION EXT

SHADY BROOK EVER ENTENSE 37H

SITZ EVERELDA ENTENSE 1137

| | |
|----|-----|
| BW | 2.9 |
| WW | 45 |
| YW | 85 |
| M | 22 |

COW

Consignor: **RX ANGUS**

A real genetic gem. She is a genetically clean 5175 daughter and a maternal granddaughter of Everelda Entense 1137, perhaps the most famous cow in the history of the breed. She sells with a heifer calf born 12/1/12 by LaGrand Special Design 4923. Rebred information available sale day.



SITZ UPWARD 307R

45 GHS LASS T77 9014 P26

RITO 0014 OF 4B24 2000 PLUS
 ECHO RIDGE RITO 0014 9014
 ECHO RIDGE BLACKBIRD 7121
 G A R EXPECTATION 4915
 GHS EXPECTATION LASS P26 101
 GS GEORGIA LASS OF 234D 740V

DOB 10/11/07
 Tatt T77
 Reg. 16059028

| | |
|----|----|
| BW | .9 |
| WW | 49 |
| YW | 89 |
| M | 29 |

COW

STOVALL LIVESTOCK

Consignor: T77 has been a solid producer while here. We are retaining her last year's heifer as her replacement. Her dam and granddam were both very good hard working cows. Notice that she is out of an Expectation daughter and her 3rd dam is out of Paramount Ambush. She sells with a 9/22/12 bull calf by the Genex bull Tokach Update who is a son of Sitz Upward 307R. She was rebred on 12/22.12 to Sitz Upward then exposed to the Daltons Protegé bull from 1/10/13 until 3/13/13. Dalton's Protegé 829 has a very balanced set of EPD's of +2.6 +52 + 98 +23 \$B +80.65

46 TOUCHSTONE EPIC EILEEN B445

CONNEALY LEADTIME
 CONNEALY LEAD ON
 ELIGENCE PLUS OF CONANGA
 B C C BUSHWACKER 41-93
 TOUCHSTONE EPIC EILEEN 7B44
 TOUCHSTONE EPIC EILEEN 71B4

DOB 12/27/05
 Tatt B445
 Reg. 15404081

| | |
|----|-----|
| BW | 2.5 |
| WW | 47 |
| YW | 85 |
| M | 30 |

COW

STOVALL LIVESTOCK

Consignor: This Lead On cow is from a very productive cow family for Dr. Lyn Wilson. She has produced a couple of good test station bulls for me and her last year's calf by Dalton's Protege 829 is being kept as her replacement. Her 9/26/12 heifer calf at side by the Genex bull Tokach Update 9009 could be better than her. She sells bred to Conneally Final Product on 12/22/12, then pasture exposed to Dalton's Protege 829 from 1/10/13 until 3/13/13.

47 TCA BLACKCAP W009

B A R EXT TRAVELER 205
 C R A BEXTOR 872 5205 608
 CRA LADY JAYE 608 498 S EASY
 G A R RETAIL PRODUCT
 G A R RETAIL PRODUCT 1274
 G A R NEW DESIGN 600

DOB 1/12/10
 Tatt W009
 Reg. 17485078

| | |
|----|-----|
| BW | 1.5 |
| WW | 45 |
| YW | 83 |
| M | 28 |

COW

TRIPLE C FARM

Consignor: A nice moderate young cow from the great Select Sires Bextor who has plenty of thickness and muscle. She is out of the GAR Retail Product 1274 who is an anchor in the Triple C program. Don't miss the chance at this potential great producing cow. Due to calve 5/18/13 to the Select Sires Bull Ingenuity.

48 TCA BLACKCAP W006

S S OBJECTIVE T510 OT26
 G A R ULTIMATE
 G A R LOAD UP 1314
 G A R RETAIL PRODUCT
 G A R RETAIL PRODUCT 1274
 G A R NEW DESIGN 600

DOB 1/9/10
 Tatt W006
 Reg. 17485079

| | |
|----|-----|
| BW | 1.8 |
| WW | 48 |
| YW | 86 |
| M | 22 |

COW

TRIPLE C FARM

Consignor: A Gardener bred female that is really attractive with great production potential. She comes from the 1274 cow which we have retained several daughters from here at Triple C. Don't miss out on one of the really good ones. Due to calve 5/8/13 to the popular Select Sires Conneally Confidence 0100.



G A R RETAIL PRODUCT

49A**WEST WIND BLACKBIRD 1511**B C MARATHON 7022

DOB 7/5/11

Tatt 1511

WEST WIND MARATHON 7408

Reg. 17116030

THOMAS BLACKBIRD 8164SUMMITCREST HIGH PRIME 0H29FALCON BLACKBIRD 330NSUMMITCREST BLACKBIRD 1K20

| | Sire | Dam |
|----|------|-----|
| BW | 2.7 | 3.6 |
| WW | 42 | 45 |
| YW | 71 | 83 |
| M | 16 | 17 |

COWConsignor: **WEST WIND FARM**

This cow has a powerful pedigree going back to BC Marathon and Paramount Ambush on her sire's side. Her dam is a product of the great Summitcrest High Prime 0H29 and the powerful Summitcrest Blackbird cow family. She will make a strong addition to any herd.

49B**WEST WIND PRIMROSE LBFB 1612**B C MARATHON 7022

DOB 4/15/12

Tatt 1612

WEST WIND MARATHON 7408

Reg. Pending

THOMAS BLACKBIRD 8164FAMOUS 7001WEST WIND F B PRIMROSEGAMBLES MISS L B F B

| | Sire | Dam |
|----|------|-----|
| BW | 2.7 | 4.9 |
| WW | 44 | 39 |
| YW | 73 | 72 |
| M | 16 | 18 |

COWConsignor: **WEST WIND FARM**

This is a stylish heifer stemming back to Gambles Miss LBFB and the great Primrose family. The females out of this line have proven to be tremendous producers and easy going females.

**WEST WIND PRIMROSE WWTN11****50A****WEST WIND MISS ROSE 911**B C MARATHON 7022

DOB 6/28/11

Tatt 911

WEST WIND MARATHON 7408

Reg. 17116025

THOMAS BLACKBIRD 8164WEST WIND KATINKAS 2000WEST WIND GISELLE WWTN23GAMBLES MISS L B F B

| | Sire | Dam |
|----|------|-----|
| BW | 2.7 | 3.6 |
| WW | 42 | 41 |
| YW | 71 | 65 |
| M | 16 | 28 |

COWConsignor: **WEST WIND FARM**

A powerful female sired by an outstanding Marathon son and going back to West Wind's great Primrose family on the dam's side. This heifer's granddam is Gambles Miss LBFB, the dam of West Wind's top producing cow and show heifer, West Wind Primrose WWTN11. Safe in calf to Connealy In Sure 8564, due to calve 10/31/13.

50B**WEST WIND LBFB MISS 100**SITZ TRAVELER 8180

DOB 10/1/10

Tatt 100

S A V 8180 TRAVELER 004

Reg. 16964493

BOYD FOREVER LADY 8003WEST WIND VANTAGER 043WEST WIND MISS PRIMROSE 7108WEST WIND GISELLE WWTN23

| | |
|----|-----|
| BW | 2.9 |
| WW | 54 |
| YW | 93 |
| M | 23 |

COWConsignor: **WEST WIND FARM**

A great 004 daughter back to Gambles Miss LBFB, the dam of Primrose WWTN11, the foundation cow of the West Wind herd. This females out of this Primrose line have proven to be tremendous producers and generate excellent show heifer prospects. Pasture exposed to West Wind Marathon Lad 1411 from 6/23/12 to 8/15/12. Safe in calf.

50C**WEST WIND MISS PRIMROSE 9010**WEST WIND FIRST VANTAGE TN19

DOB 1/15/10

Tatt 9010

WEST WIND ADVANTAGE 5807

Reg. 16960313

GAMBLES MISS L B F BBR MIDLANDWEST WIND PRIMROSE 5006WEST WIND PRIMROSE WWTN 11

| | |
|----|-----|
| BW | 4.6 |
| WW | 41 |
| YW | 69 |
| M | 22 |

COWConsignor: **WEST WIND FARM**

This cow goes back to Leachman Saughatchee on the top of her pedigree and BR Midland on the dam's side. She is a granddaughter of the great West Wind Primrose WWTN11 who was Reserve Champion cow/calf pair at the Atlantic National Show in Timonium, MD and first in her class bred-by-exhibitor at the North American International Livestock Show. Sells with bull calf at side born 3/24/13 sired by West Wind Marathon Lad 1411.

COMMERCIAL BRED HEIFERS

A nice group of Commercial Bred Heifers from Michael and Shannon Cox – Kingsport, TN. **Ten** Angus-based commercial bred heifers bred to a calving ease bull. These heifers will be calving in the early fall. More information on the heifers sale day.



Commercial Females sell last.



For Dates and Information on Future Sales Conducted by

***Southwest Virginia Angus
Association***

Check our website at

www.swvaangus.org

51

BF UPWARD 218

CONNEALY ONWARD

DOB 4/30/12

SITZ UPWARD 307R

Tatt 218

SITZ HENRIETTA PRIDE 81M

Reg. 17336360

SITZ ALLIANCE 6595

| | |
|----|-----|
| BW | 2.5 |
| WW | 55 |
| YW | 105 |
| M | 36 |

W A F EMMEHY 59R64

H C EMMEHY 9R64

| | BW | WW | ADG | YW |
|--------|-----|-----|------|------|
| Weight | 71 | 631 | 4.43 | 1181 |
| Ratio | 101 | 103 | 109 | 97 |

VQA BULL

Consignor: **BULLOCK FARM**

54

GRAYSTONE UPWARD 262

CONNEALY ONWARD

DOB 4/29/12

SITZ UPWARD 307R

Tatt 262

SITZ HENRIETTA PRIDE 81M

Reg. 17475459

S A V 8180 TRAVELER 004

| | |
|----|-----|
| BW | 1.7 |
| WW | 57 |
| YW | 110 |
| M | 33 |

GRAYSTONE PETUNIA 159

GRAYSTONE PETUNIA 122

| | BW | WW | ADG | YW |
|--------|----|-----|------|------|
| Weight | 76 | 756 | 3.89 | 1276 |
| Ratio | 99 | 102 | 96 | 105 |

VQA BULL

Consignor: **GRAYSTONE FARM**

52

BF BLACKCAP PENDLETON 217

S A V FINAL ANSWER 0035

DOB 2/13/12

HARB PENDLETON 765 J H

Tatt 217

H A R B BLACK LADY 375 J H

Reg. 17336359

D/D FUTURE DIRECTION 4109

| | |
|----|-----|
| BW | 3.0 |
| WW | 51 |
| YW | 91 |
| M | 31 |

BAF FD BLACKCAP 7B01

DE BUSK 234D BLACKCAP 025

| | BW | WW | ADG | YW |
|--------|-----|-----|------|------|
| Weight | 80 | 692 | 4.16 | 1153 |
| Ratio | 114 | 113 | 103 | 95 |

VQA BULL

Consignor: **BULLOCK FARM**

55

GRAYSTONE UPWARD 52

CONNEALY ONWARD

DOB 3/24/12

SITZ UPWARD 307R

Tatt 52

SITZ HENRIETTA PRIDE 81M

Reg. 17475458

LUKENS 9440 SCOTCH CAP L463

| | |
|----|-----|
| BW | 2.2 |
| WW | 49 |
| YW | 99 |
| M | 31 |

GRAYSTONE BLACKBIRD 211

GRAYSTONE LUCY 7495

| | BW | WW | ADG | YW |
|--------|-----|-----|------|------|
| Weight | 80 | 716 | 4.27 | 1241 |
| Ratio | 103 | 97 | 105 | 102 |

VQA BULL

Consignor: **GRAYSTONE FARM**

53

GRAYSTONE GAME DAY 372

BOYD NEW DAY 8005

DOB 4/30/12

GDAR GAME DAY 449

Tatt 372

G D A R MISS WIX 474

Reg. 17475460

S A F 598 BANDO 5175

| | |
|----|-----|
| BW | 1.3 |
| WW | 45 |
| YW | 90 |
| M | 27 |

GRAYSTONE BEROSA 943

GRAYSTONE BEROSA 9499

| | BW | WW | ADG | YW |
|--------|-----|-----|------|------|
| Weight | 80 | 729 | 4.32 | 1276 |
| Ratio | 101 | 98 | 107 | 105 |

VQA BULL

Consignor: **GRAYSTONE FARM**



SITZ UPWARD 307R

56 GRAYSTONE UPWARD 232

CONNEALY ONWARD

DOB 3/21/12

SITZ UPWARD 307R

Tatt 232

SITZ HENRIETTA PRIDE 81M

Reg. 17475457

S A V 8180 TRAVELER 004

| | |
|----|-----|
| BW | 2.0 |
| WW | 56 |
| YW | 103 |
| M | 31 |

GRAYSTONE PETUNIA 436

GRAYSTONE PETUNIA 4396

| | BW | WW | ADG | YW |
|--------|-----|-----|------|------|
| Weight | 80 | 762 | 3.86 | 1256 |
| Ratio | 101 | 103 | 95 | 103 |

VQA BULL

Consignor: **GRAYSTONE FARM**

59 GRAYSTONE UPWARD 162

CONNEALY ONWARD

DOB 2/28/12

SITZ UPWARD 307R

Tatt 162

SITZ HENRIETTA PRIDE 81M

Reg. 17475455

LUKENS 9440 SCOTCH CAP L463

| | |
|----|-----|
| BW | 2.5 |
| WW | 52 |
| YW | 97 |
| M | 31 |

GRAYSTONE PETONIA 431

GRAYSTONE PETUNIA 4396

| | BW | WW | ADG | YW |
|--------|-----|-----|------|------|
| Weight | 82 | 748 | 3.69 | 1220 |
| Ratio | 105 | 101 | 91 | 100 |

VQA BULL

Consignor: **GRAYSTONE FARM**

57 GRAYSTONE UPWARD 22

CONNEALY ONWARD

DOB 3/18/12

SITZ UPWARD 307R

Tatt 22

SITZ HENRIETTA PRIDE 81M

Reg. 17475456

BOYD NEW DAY 8005

| | |
|----|-----|
| BW | 2.0 |
| WW | 57 |
| YW | 109 |
| M | 32 |

GRAYSTONE BLACKBIRD 56

GRAYSTONE BLACKBIRD 211

| | BW | WW | ADG | YW |
|--------|----|-----|------|------|
| Weight | 78 | 774 | 4.00 | 1272 |
| Ratio | 99 | 104 | 99 | 104 |

VQA BULL

Consignor: **GRAYSTONE FARM**

60 GRAYSTONE IDENTITY 462

BLUEGRASS NEW DESIGN 205

DOB 2/1/12

SITZ IDENTITY 2575

Tatt 462

SITZ FLORABELLE FANNY 2683

Reg. 17475454

RITO 6I6 OF 4B20 6807

| | |
|----|-----|
| BW | -.2 |
| WW | 63 |
| YW | 126 |
| M | 24 |

GRAYSTONE PETUNIA 154

GRAYSTONE PETUNIA 122

| | BW | WW | ADG | YW |
|--------|----|-----|------|------|
| Weight | 76 | 883 | 5.20 | 1533 |
| Ratio | 96 | 119 | 128 | 126 |

VQA BULL

Consignor: **GRAYSTONE FARM**

58 GRAYSTONE GAME DAY 112

BOYD NEW DAY 8005

DOB 3/12/12

GDAR GAME DAY 449

Tatt 112

G D A R MISS WIX 474

Reg. 17475461

SITZ UPWARD 307R

| | |
|----|-----|
| BW | 1.3 |
| WW | 54 |
| YW | 106 |
| M | 29 |

GRAYSTONE BLACKBIRD 650

GRAYSTONE BLACKBIRD 505

| | BW | WW | ADG | YW |
|--------|-----|-----|------|------|
| Weight | 74 | 787 | 4.25 | 1341 |
| Ratio | 102 | 106 | 105 | 110 |

VQA BULL

Consignor: **GRAYSTONE FARM**



SITZ IDENTITY 2575

61 GRAYSTONE NET WORTH 622

S A V 8180 TRAVELER 004 DOB 4/24/12
 S A V NET WORTH 4200 Tatt 622
 S A V MAY 2410 Reg. 17483452
 K C F BENNETT TOTAL

| | |
|----|-----|
| BW | 2.2 |
| WW | 49 |
| YW | 91 |
| M | 26 |

GRAYSTONE BEROSA 627
 GRAYSTONE BEROSA 415

| | | | | |
|--------|----|-----|------|------|
| | BW | WW | ADG | YW |
| Weight | 78 | 742 | 3.71 | 1239 |
| Ratio | 99 | 100 | 92 | 102 |

VQA BULL

Consignor: **GRAYSTONE FARM/
 J S J CATTLE**



MCC DAYBREAK

62 GRAYSTONE NET WORTH 152

S A V 8180 TRAVELER 004 DOB 3/29/12
 S A V NET WORTH 4200 Tatt 152
 S A V MAY 2410 Reg. 17483453
 B A R EXT TRAVELER 205

| | |
|----|-----|
| BW | 2.3 |
| WW | 45 |
| YW | 87 |
| M | 29 |

GRAYSTONE PETUNIA 122
 GRAYSTONE PETUNIA 229

| | | | | |
|--------|----|-----|------|------|
| | BW | WW | ADG | YW |
| Weight | 64 | 792 | 3.98 | 1334 |
| Ratio | 89 | 107 | 98 | 110 |

VQA BULL

Consignor: **GRAYSTONE FARM/
 J S J CATTLE**

64 HC DAYBREAK 129625A

BOYD NEW DAY 8005 DOB 3/6/12
 MCC DAYBREAK Tatt 2962
 MCC MISS FOCUS 134 Reg. 17389757
 WHITESTONE ADVOCATE

| | |
|----|-----|
| BW | 1.7 |
| WW | 55 |
| YW | 98 |
| M | 23 |

HC O LASS 9625A
 HC BUSHWACKER LASS 625A

| | | | | |
|--------|-----|-----|------|------|
| | BW | WW | ADG | YW |
| Weight | 75 | 664 | 4.70 | 1318 |
| Ratio | 107 | 102 | 116 | 108 |

VQA BULL

Consignor: **HAWKINSCREST**

63 GRAYSTONE NET WORTH 942

S A V 8180 TRAVELER 004 DOB 3/21/12
 S A V NET WORTH 4200 Tatt 942
 S A V MAY 2410 Reg. 17483462
 SITZ TRAVELER 8180

| | |
|----|-----|
| BW | 2.6 |
| WW | 44 |
| YW | 85 |
| M | 25 |

GRAYSTONE BEROSA 9499
 GRAYSTONE BEROSA 670

| | | | | |
|--------|----|-----|------|------|
| | BW | WW | ADG | YW |
| Weight | 68 | 710 | 4.68 | 1219 |
| Ratio | 95 | 96 | 115 | 100 |

VQA BULL

Consignor: **GRAYSTONE FARM/
 J S J CATTLE**

65 HC PAYWEIGHT 125034

VERMILION PAYWEIGHT J847 DOB 3/1/12
 BASIN PAYWEIGHT 107S Tatt 2503
 BASIN LUCY 3829 Reg. 17394814
 B C C BUSHWACKER 41-93

| | |
|----|-----|
| BW | 3.4 |
| WW | 61 |
| YW | 99 |
| M | 21 |

HC QUEENY LASS OF B&J 5034
 K A LASS 2014

| | | | | |
|--------|-----|-----|------|------|
| | BW | WW | ADG | YW |
| Weight | 84 | 680 | 4.13 | 1215 |
| Ratio | 109 | 96 | 102 | 100 |

VQA BULL

Consignor: **HAWKINSCREST**

66**HC UPWARD 1225T**CONNEALY ONWARD

DOB 2/27/12

SITZ UPWARD 307R

Tatt 2753

SITZ HENRIETTA PRIDE 81M

Reg. 17388100

V D A R VISION 243

| | |
|----|-----|
| BW | 1.8 |
| WW | 53 |
| YW | 100 |
| M | 39 |

BT EVERELDA ENTENSE 25JSITZ EVERELDA ENTENSE 1905

| | BW | WW | ADG | YW |
|--------|-----|-----|------|------|
| Weight | 78 | 611 | 3.57 | 1065 |
| Ratio | 100 | 100 | 88 | 87 |

VQA BULLConsignor: **HAWKINSCREST****YON FUTURE FOCUS T219****67****HC PAYWEIGHT 12719A**VERMILION PAYWEIGHT J847

DOB 1/30/12

BASIN PAYWEIGHT 107S

Tatt 2719

BASIN LUCY 3829

Reg. 17387439

H A IMAGE MAKER 0415

| | |
|----|-----|
| BW | -.6 |
| WW | 65 |
| YW | 110 |
| M | 23 |

HC EULIMA 7219AGRAYSTONE EULIMA 185

| | BW | WW | ADG | YW |
|--------|----|-----|------|------|
| Weight | 60 | 618 | 3.20 | 1050 |
| Ratio | 80 | 95 | 79 | 86 |

VQA BULLConsignor: **HAWKINSCREST****69****HC FUTURE FOCUS 129719J4**MYTTY IN FOCUS

DOB 1/23/12

YON FUTURE FOCUS T219

Tatt 2971

YON HAZEL R133

Reg. 17389780

HC WAR ALLIANCE 536150

| | |
|----|-----|
| BW | .5 |
| WW | 62 |
| YW | 110 |
| M | 29 |

HC RITA 9719J4HC MISS RITA 719J4

| | BW | WW | ADG | YW |
|--------|----|-----|------|------|
| Weight | 68 | 715 | 4.64 | 1296 |
| Ratio | 92 | 104 | 115 | 106 |

VQA BULLConsignor: **HAWKINSCREST****68****HC AMBUSH 1284J13**ROCKN D AMBUSH 1531

DOB 1/24/12

B&J AMBUSH 19D

Tatt 2841

BT EVERELDA ENTENSE 76D

Reg. 17387442

H C HYLINE 42J7

| | |
|----|----|
| BW | .3 |
| WW | 45 |
| YW | 77 |
| M | 27 |

HC PRIDE 84J13HC RITA 4J13

| | BW | WW | ADG | YW |
|--------|----|-----|------|------|
| Weight | 72 | 575 | 3.93 | 1078 |
| Ratio | 93 | 100 | 97 | 88 |

VQA BULLConsignor: **HAWKINSCREST****70****HC FINAL ANSWER 1272R27**S A V FINAL ANSWER 0035

DOB 1/17/12

HC FINAL ANSWER 9072T

Tatt 2922

H C EVERELDA ENTENSE 72T

Reg. 17387441

S A V FINAL ANSWER 0035HC EVERELDA ENTENSE 92R27C L EVERELDA ENTENSE 656S

| | |
|----|-----|
| BW | 1.7 |
| WW | 48 |
| YW | 89 |
| M | 25 |

| | BW | WW | ADG | YW |
|--------|-----|-----|------|------|
| Weight | 80 | 578 | 3.68 | 1047 |
| Ratio | 108 | 100 | 91 | 86 |

VQA BULLConsignor: **HAWKINSCREST**

71 HC AMBUSH 127729

ROCKN D AMBUSH 1531

DOB 1/17/12

B&J AMBUSH 19D

Tatt 2772

BT EVERELDA ENTENSE 76D

Reg. 17387440

I A M HYDRO 1171

| | |
|----|-----|
| BW | 1.9 |
| WW | 41 |
| YW | 75 |
| M | 25 |

HC MISS HYDRO 7729

K A LASS 2016

| Weight | BW | WW | ADG | YW |
|--------|-----|-----|------|------|
| Ratio | 78 | 601 | 3.88 | 1131 |
| | 102 | 93 | 96 | 93 |

**VQA
BULL**

Consignor: **HAWKINSCREST**

73 K A F FORWARD 220

BOYD FORWARD 6025

DOB 4/17/12

G V F FORWARD 9042

Tatt 220

G V F GEORGINA 5073

Reg. 17474227

GDAR SVF TRAVELER 234D

| | |
|----|-----|
| BW | 1.7 |
| WW | 47 |
| YW | 86 |
| M | 25 |

K A F MISS EVERGREEN 2131

WOODHILL EVERGREEN 58-825

| Weight | BW | WW | ADG | YW |
|--------|----|-----|------|------|
| Ratio | 58 | 638 | 4.66 | 1264 |
| | 85 | 91 | 115 | 104 |

**VQA
BULL**

Consignor: **KING ANGUS FARM**

72 HC IN FOCUS 12952A

S A F FOCUS OF E R

DOB 1/8/12

MYTTY IN FOCUS

Tatt 2952

MYTTY COUNTESS 906

Reg. 17389849

B&J AMBUSH 19D

| | |
|----|-----|
| BW | 1.9 |
| WW | 55 |
| YW | 96 |
| M | 26 |

HC PRIMROSE 952A

HC PRIMROSE 5219

| Weight | BW | WW | ADG | YW |
|--------|-----|-----|------|------|
| Ratio | 76 | 708 | 4.84 | 1349 |
| | 110 | 109 | 119 | 111 |

**VQA
BULL**

Consignor: **HAWKINSCREST**

74 K A F FORWARD 212

BOYD FORWARD 6025

DOB 4/15/12

G V F FORWARD 9042

Tatt 212

G V F GEORGINA 5073

Reg. 17434589

LEACHMAN RIGHT TIME

| | |
|----|----|
| BW | .7 |
| WW | 45 |
| YW | 86 |
| M | 26 |

K A F BLACK MISS 4196

G V F BLACK MISS 9208

| Weight | BW | WW | ADG | YW |
|--------|----|-----|------|------|
| Ratio | 64 | 642 | 4.66 | 1219 |
| | 98 | 92 | 115 | 100 |

**VQA
BULL**

Consignor: **KING ANGUS FARM**



SITZ DASH 10277

75 K A F DASH 205

SITZ UPWARD 307R

DOB 3/18/12

SITZ DASH 10277

Tatt 205

SITZ EVERELDA ENTENSE 2665

Reg. 17434303

LEMMON NEWSLINE C804

| | |
|----|----|
| BW | .9 |
| WW | 48 |
| YW | 83 |
| M | 27 |

K A F MISS BURGESS 802

K A F MISS BURGESS 410

| Weight | BW | WW | ADG | YW |
|--------|-----|-----|------|------|
| Ratio | 66 | 716 | 2.64 | 1107 |
| | 103 | 102 | 65 | 91 |

**VQA
BULL**

Consignor: **KING ANGUS FARM**

76 LRAF TUCKER 312

H A IMAGE MAKER 0415

DOB 3/29/12

BENFIELD SUBSTANCE 8506

Tatt 312

BENFIELD EDELLA 1105

Reg. 17476561

K C F BENNETT TOTAL

| | |
|----|----|
| BW | -6 |
| WW | 56 |
| YW | 93 |
| M | 24 |

GRAYSTONE BEROSA 190

GRAYSTONE BEROSA 945

| Weight | BW | WW | ADG | YW |
|--------|----|-----|------|------|
| Ratio | 48 | 676 | 3.80 | 1171 |
| | 83 | 105 | 94 | 96 |

VQA BULL

Consignor: **LIGHTNING RIDGE ANGUS FARM**

79 LUCAS VT OBJECTIVE 244A

S S OBJECTIVE T510 OT26

DOB 4/6/12

VT OBJECTIVE DAF 802

Tatt 244A

VT 208 NEW DESIGN B36

Reg. 17207388

BON VIEW NEW DESIGN 878

| | |
|----|-----|
| BW | 1.9 |
| WW | 55 |
| YW | 104 |
| M | 33 |

LUCAS LADY 2J4 OF ND878

LUCAS LADY HHF 1418 191 0F10

| Weight | BW | WW | ADG | YW |
|--------|-----|-----|------|------|
| Ratio | 80 | 716 | 4.64 | 1334 |
| | 104 | 108 | 115 | 110 |

VQA BULL

Consignor: **LUCAS FARM**

77 LRAF PENDLETON 112

S A V FINAL ANSWER 0035

DOB 2/25/12

HARB PENDLETON 765 J H

Tatt 112

H A R B BLACK LADY 375 J H

Reg. 17475552

SITZ UPWARD 307R

| | |
|----|-----|
| BW | 1.0 |
| WW | 55 |
| YW | 107 |
| M | 32 |

LRAF MISS CLOVA 210

LRAF MISS CLOVA 106

| Weight | BW | WW | ADG | YW |
|--------|----|-----|------|------|
| Ratio | 58 | 661 | 4.80 | 1246 |
| | 98 | 103 | 118 | 102 |

VQA BULL

Consignor: **LIGHTNING RIDGE ANGUS FARM**



HARB PENDLETON 765 J H

78 LUCAS VT OBJECTIVE 246A

S S OBJECTIVE T510 OT26

DOB 4/19/12

VT OBJECTIVE DAF 802

Tatt 246A

VT 208 NEW DESIGN B36

Reg. 17324148

THREE TREES ROCK ON 0059

| | |
|----|-----|
| BW | 1.6 |
| WW | 51 |
| YW | 93 |
| M | 29 |

LUCAS LADY ROCK ON 4F10

LUCAS LADY ILLINI 9S16

| Weight | BW | WW | ADG | YW |
|--------|-----|-----|------|------|
| Ratio | 79 | 661 | 4.00 | 1163 |
| | 101 | 100 | 99 | 96 |

VQA BULL

Consignor: **LUCAS FARM**

80 LUCAS KCF UPWARD T242M

SITZ UPWARD 307R

DOB 3/31/12

K C F BENNETT UPWARD W538

Tatt 242M

K C F MISS RETAIL PROD S480

Reg. 17207381

K C F BENNETT PERFORMER

| | |
|----|-----|
| BW | 2.4 |
| WW | 55 |
| YW | 107 |
| M | 29 |

LUCAS LADY PERFORMER T8390

V I EXT X72

| Weight | BW | WW | ADG | YW |
|--------|----|-----|------|------|
| Ratio | 76 | 608 | 4.34 | 1176 |
| | 99 | 99 | 107 | 97 |

VQA BULL

Consignor: **LUCAS FARM**

81 LUCAS KCF UPWARD 241M

SITZ UPWARD 307R
 K C F BENNETT UPWARD W538
 K C F MISS RETAIL PROD S480
 S A V 8180 TRAVELER 004
 LUCAS LADY 004 8480
 LUCAS LADY WESTWIND ON23

DOB 3/31/12
 Tatt 241M
 Reg. 17207380

| | |
|----|-----|
| BW | 2.4 |
| WW | 53 |
| YW | 100 |
| M | 30 |

| | BW | WW | ADG | YW |
|--------|-----|-----|------|------|
| Weight | 78 | 608 | 4.14 | 1135 |
| Ratio | 102 | 99 | 102 | 93 |

**VQA
BULL**

Consignor: **LUCAS FARM**

83 LUCAS VT OBJECTIVE 232M

S S OBJECTIVE T510 OT26
 VT OBJECTIVE DAF 802
 VT 208 NEW DESIGN B36
 G A R US PREMIUM BEEF
 LUCAS LADY USPB 7320
 LUCAS LADY ND 036 4034

DOB 3/10/12
 Tatt 232M
 Reg. 17207383

| | |
|----|----|
| BW | .5 |
| WW | 56 |
| YW | 99 |
| M | 30 |

| | BW | WW | ADG | YW |
|--------|----|-----|------|------|
| Weight | 74 | 721 | 4.46 | 1242 |
| Ratio | 96 | 109 | 110 | 102 |

**VQA
BULL**

Consignor: **LUCAS FARM**

82 LUCAS VT OBJECTIVE 234M

S S OBJECTIVE T510 OT26
 VT OBJECTIVE DAF 802
 VT 208 NEW DESIGN B36
 HYLINE RIGHT TIME 338
 LUCAS LADY HRT 338 5037
 LUCAS LADY WESTWIND ON23

DOB 3/14/12
 Tatt 234M
 Reg. 17207384

| | |
|----|-----|
| BW | 1.0 |
| WW | 54 |
| YW | 97 |
| M | 29 |

| | BW | WW | ADG | YW |
|--------|----|-----|------|------|
| Weight | 75 | 688 | 4.39 | 1206 |
| Ratio | 96 | 104 | 108 | 99 |

**VQA
BULL**

Consignor: **LUCAS FARM**

84 LUCAS IRONSTONE 227F

C A FUTURE DIRECTION 5321
 R/M IRONSTONE 4047
 B/R RUBY OF TIFFANY 5144
 MYTTY IN FOCUS
 LUCAS LADY IN FOCUS 727S
 LUCAS LADY EXT 4036

DOB 2/23/12
 Tatt 227F
 Reg. 17207376

| | |
|----|-----|
| BW | 3.2 |
| WW | 57 |
| YW | 99 |
| M | 20 |

| | BW | WW | ADG | YW |
|--------|-----|-----|------|------|
| Weight | 81 | 696 | 3.79 | 1158 |
| Ratio | 106 | 102 | 93 | 95 |

**VQA
BULL**

Consignor: **LUCAS FARM**



CONNELY IMPRESSION

85 LUCAS IMPRESSION 214J

CONNELY REFLECTION
 CONNEALY IMPRESSION
 PEARL PAMMY OF CONANGA 194
 G A R INTEGRITY
 LUCAS LADY INTEGERTY 5041
 LUCAS LADY HHF 1418 1A17

DOB 1/30/12
 Tatt 214J
 Reg. 17207365

| | |
|----|-----|
| BW | 1.3 |
| WW | 42 |
| YW | 80 |
| M | 27 |

| | BW | WW | ADG | YW |
|--------|----|-----|------|------|
| Weight | 74 | 570 | 4.11 | 1029 |
| Ratio | 96 | 84 | 101 | 84 |

**VQA
BULL**

Consignor: **LUCAS FARM**

86 MATNEY YG 1219

G A R PRECISION 1680

DOB 3/13/12

G A R YIELD GRADE

Tatt 1219

G A R EXT 4526

Reg. 17389818

G A R GRID MAKER

| | |
|----|-----|
| BW | 2.4 |
| WW | 46 |
| YW | 94 |
| M | 16 |

MATNEY DESIGN 8034

G A R 1407 NEW DESIGN X73

| Weight Ratio | BW | WW | ADG | YW |
|--------------|----|-----|------|------|
| | 72 | 503 | 3.95 | 1148 |
| | 92 | 89 | 97 | 94 |

VQA BULL

Consignor: **MATNEY ANGUS FARM**

89 M A F 12R25

S A V FINAL ANSWER 0035

DOB 3/20/12

CONNEALY RIGHT ANSWER 746

Tatt 1225

HAPPY DELL OF CONANGA 262

Reg. 17209507

SITZ UPWARD 307R

| | |
|----|-----|
| BW | 1.3 |
| WW | 65 |
| YW | 118 |
| M | 34 |

K A ELLUNA 9319

K A ELLUNA 1131

| Weight Ratio | BW | WW | ADG | YW |
|--------------|----|-----|------|------|
| | 76 | 821 | 4.11 | 1329 |
| | 99 | 102 | 101 | 109 |

VQA BULL

Consignor: **MULLINS ANGUS FARM**

87 MATNEY 50/50-1202

B/R NEW DESIGN 036

DOB 3/7/12

G A R NEW DESIGN 5050

Tatt 1202

G A R PRECISION 706

Reg. 17389846

RITO 2V1 OF 2536 1407

| | |
|----|-----|
| BW | 2.1 |
| WW | 46 |
| YW | 92 |
| M | 26 |

MATNEY 2V1 0606

MATNEY BLACKBIRD M179-19-19

| Weight Ratio | BW | WW | ADG | YW |
|--------------|----|-----|------|------|
| | 72 | 488 | 4.09 | 1010 |
| | 91 | 87 | 101 | 83 |

VQA BULL

Consignor: **MATNEY ANGUS FARM**

90 M A F 12G24

CONNEALY ONWARD

DOB 2/9/12

BOYD FORWARD 6025

Tatt 1224

SITZ RLS EISA EVERGREEN 30P

Reg. 17211891

S S OBJECTIVE T510 OT26

| | |
|----|-----|
| BW | -.2 |
| WW | 61 |
| YW | 112 |
| M | 26 |

G V F BLACKBIRD 9033

G V F BLACKBIRD 7051

| Weight Ratio | BW | WW | ADG | YW |
|--------------|----|-----|------|------|
| | 76 | 782 | 4.48 | 1297 |
| | 99 | 98 | 111 | 106 |

VQA BULL

Consignor: **MULLINS ANGUS FARM**

88 MATNEY 50/50-1200

B/R NEW DESIGN 036

DOB 2/20/12

G A R NEW DESIGN 5050

Tatt 1200

G A R PRECISION 706

Reg. 17389845

RITO 112 OF 2536 RITO 616

| | |
|----|----|
| BW | .8 |
| WW | 51 |
| YW | 96 |
| M | 31 |

MATNEY TAYLOR 1 I 2 - 0618

CLIFTON SIMPLY FOREVER 072

| Weight Ratio | BW | WW | ADG | YW |
|--------------|----|-----|------|------|
| | 70 | 612 | 4.55 | 1188 |
| | 89 | 109 | 112 | 98 |

VQA BULL

Consignor: **MATNEY ANGUS FARM**



G A R New Design 5050

91 PMA NETWORK P169

S A V NET WORTH 4200

DOB 4/12/12

S A V SPOTLIGHT 8192

Tatt P169

S A V EMBLYNETTE 3128

Reg. 17344194

G A R RETAIL PRODUCT

| | |
|----|-----|
| BW | 2.3 |
| WW | 45 |
| YW | 87 |
| M | 31 |

RITA 692 OF RITA 3B92 RP

RITA 3B92 OF RITA 0I17 BW

| | BW | WW | ADG | YW |
|--------|-----|-----|------|------|
| Weight | 86 | 695 | 3.30 | 1144 |
| Ratio | 104 | 92 | 81 | 94 |

VQA BULL

Consignor: **PHILLIPS MOUNTAIN ANGUS
BUD PHILLIPS**

94 PMA NETWORK P162

S A V NET WORTH 4200

DOB 4/8/12

S A V SPOTLIGHT 8192

Tatt P162

S A V EMBLYNETTE 3128

Reg. 17344192

TC TOTAL 410

RITA 8H87 OF RITA 3B7 TOTAL

RITA 3B7 OF 2536 BW

| | BW | WW | ADG | YW |
|--------|-----|-----|------|------|
| Weight | 93 | 827 | 4.29 | 1395 |
| Ratio | 113 | 110 | 106 | 115 |

| | |
|----|-----|
| BW | 4.1 |
| WW | 61 |
| YW | 108 |
| M | 29 |

VQA BULL

Consignor: **PHILLIPS MOUNTAIN ANGUS
BUD PHILLIPS**

92 PMA NETWORK P164

S A V NET WORTH 4200

DOB 4/12/12

S A V SPOTLIGHT 8192

Tatt P164

S A V EMBLYNETTE 3128

Reg. 17344195

C A FUTURE DIRECTION 5321

| | |
|----|-----|
| BW | 2.5 |
| WW | 52 |
| YW | 93 |
| M | 31 |

RITA 7FL6 OF RITA 3B5 FD

RITA 3B5 OF 2536 BW

| | BW | WW | ADG | YW |
|--------|-----|-----|------|------|
| Weight | 86 | 811 | 3.75 | 1340 |
| Ratio | 104 | 108 | 93 | 110 |

VQA BULL

Consignor: **PHILLIPS MOUNTAIN ANGUS
BUD PHILLIPS**

95 PMA NETWORK P158

S A V NET WORTH 4200

DOB 3/28/12

S A V SPOTLIGHT 8192

Tatt P158

S A V EMBLYNETTE 3128

Reg. 17344191

BON VIEW NEW DESIGN 1407

VT 1407 NEW DESIGN B4

G A R EXPECTATION 461

| | BW | WW | ADG | YW |
|--------|----|-----|------|------|
| Weight | 81 | 732 | 3.07 | 1177 |
| Ratio | 98 | 97 | 76 | 97 |

| | |
|----|----|
| BW | .8 |
| WW | 40 |
| YW | 82 |
| M | 30 |

VQA BULL

Consignor: **PHILLIPS MOUNTAIN ANGUS
BUD PHILLIPS**

93 PMA NETWORK P171

S A V NET WORTH 4200

DOB 4/11/12

S A V SPOTLIGHT 8192

Tatt P171

S A V EMBLYNETTE 3128

Reg. 17344193

G A R COMMITMENT

| | |
|----|-----|
| BW | -.3 |
| WW | 42 |
| YW | 83 |
| M | 26 |

M A F 1C8

M A F 2RT2 009

| | BW | WW | ADG | YW |
|--------|----|-----|------|------|
| Weight | 71 | 741 | 3.34 | 1204 |
| Ratio | 87 | 98 | 82 | 99 |

VQA BULL

Consignor: **PHILLIPS MOUNTAIN ANGUS
BUD PHILLIPS**



SAV NET WORTH 4200

96 PMA NETWORKTH P172

S A V NET WORTH 4200

DOB 3/26/12

S A V SPOTLIGHT 8192

Tatt P172

S A V EMBLYNETTE 3128

Reg. 17344190

G A R COMMITMENT

| | |
|----|-----|
| BW | 2.5 |
| WW | 38 |
| YW | 78 |
| M | 27 |

GM EVE COMMITMENT

G M 590 OF OSCAR 711

| Weight | BW | WW | ADG | YW |
|--------|-----|-----|------|------|
| Ratio | 86 | 720 | 3.55 | 1206 |
| | 105 | 95 | 88 | 99 |

VQA BULL

Consignor: **PHILLIPS MOUNTAIN ANGUS
BUD PHILLIPS**

99 PMA NETWORKTH P166

S A V NET WORTH 4200

DOB 3/17/12

S A V SPOTLIGHT 8192

Tatt P166

S A V EMBLYNETTE 3128

Reg. 17344187

G A R PRECISION 1680

| | |
|----|----|
| BW | .9 |
| WW | 43 |
| YW | 84 |
| M | 26 |

TCA BLACKCAP T750

CALLAWAYS BLACKCAP 0810

| Weight | BW | WW | ADG | YW |
|--------|----|-----|------|------|
| Ratio | 77 | 744 | 3.80 | 1265 |
| | 94 | 99 | 94 | 104 |

VQA BULL

Consignor: **PHILLIPS MOUNTAIN ANGUS
BUD PHILLIPS**

97 PMA NETWORKTH P156

S A V NET WORTH 4200

DOB 3/19/12

S A V SPOTLIGHT 8192

Tatt P156

S A V EMBLYNETTE 3128

Reg. 17344189

RITO 6I6 OF 4B20 6807

| | |
|----|-----|
| BW | 1.0 |
| WW | 47 |
| YW | 88 |
| M | 27 |

PMA 102

RITA 8E6 OF RITA 2B21 BEXTOR

| Weight | BW | WW | ADG | YW |
|--------|----|-----|------|------|
| Ratio | 73 | 729 | 3.14 | 1200 |
| | 95 | 97 | 78 | 99 |

VQA BULL

Consignor: **PHILLIPS MOUNTAIN ANGUS
BUD PHILLIPS**

100 PMA 152 RITO BLACKCAP

RITO 6I6 OF 4B20 6807

DOB 2/24/12

RITO 1I2 OF 2536 RITO 6I6

Tatt P152

G A R PRECISION 2536

Reg. 17309234

B A R EXT TRAVELER 205

| | |
|----|-----|
| BW | 1.8 |
| WW | 39 |
| YW | 75 |
| M | 26 |

MM BLACKCAP LASS 4882

M M BLACKCAP LASS 488

| Weight | BW | WW | ADG | YW |
|--------|-----|-----|------|------|
| Ratio | 84 | 658 | 3.70 | 1214 |
| | 101 | 92 | 91 | 100 |

VQA BULL

Consignor: **PHILLIPS MOUNTAIN ANGUS
GARRETT PHILLIPS**

98 PMA NETWORKTH P155

S A V NET WORTH 4200

DOB 3/19/12

S A V SPOTLIGHT 8192

Tatt P155

S A V EMBLYNETTE 3128

Reg. 17344188

G A R RETAIL PRODUCT

| | |
|----|-----|
| BW | 2.1 |
| WW | 51 |
| YW | 100 |
| M | 28 |

BALDRIDGE BLACKCAP S835

VT 1407 NEW DESIGN Z38

| Weight | BW | WW | ADG | YW |
|--------|----|-----|------|------|
| Ratio | 82 | 788 | 5.04 | 1396 |
| | 99 | 105 | 124 | 115 |

VQA BULL

Consignor: **PHILLIPS MOUNTAIN ANGUS
BUD PHILLIPS**



RITO 1I2 OF 2536 RITO 6I6

101 PMA 148 RITO BLACKCAP

RITO 616 OF 4B20 6807
 RITO 112 OF 2536 RITO 616
 G A R PRECISION 2536
 G A R PREDESTINED
 GRACE MEADOWS BLACKCAP U083
 BALDRIDGE BLACKCAP S835

DOB 2/24/12
 Tatt P148
 Reg. 17309238

| | |
|----|-----|
| BW | 2.0 |
| WW | 55 |
| YW | 101 |
| M | 25 |

| | | | |
|----|-----|------|------|
| BW | WW | ADG | YW |
| 77 | 698 | 4.39 | 1305 |
| 95 | 98 | 108 | 107 |

VQA BULL

Consignor: **PHILLIPS MOUNTAIN ANGUS GARRETT PHILLIPS**

103 RV ACE UPWARD RIGHT TIME

SITZ UPWARD 307R
 ACE POWER UP 965
 ACE EVER ENTENSE 657
 DIAMOND JUSTICE 901S
 ACE LUCY 149
 BASIN LUCY N014

DOB 1/9/12
 Tatt R249
 Reg. 17287512

| | |
|----|-----|
| BW | 1.6 |
| WW | 53 |
| YW | 97 |
| M | 30 |

| | | | |
|-----|-----|------|------|
| BW | WW | ADG | YW |
| 87 | 772 | 3.07 | 1143 |
| 100 | 100 | 76 | 94 |

VQA BULL

Consignor: **RHEA VALLEY ANGUS FARM**

102 PMA 147 ANSWER OBJECTIVE

SITZ TRAVELER 8180
 S A V FINAL ANSWER 0035
 S A V EMULOUS 8145
 S S OBJECTIVE T510 OT26
 G A R OBJECTIVE N306
 G A R RETAIL PRODUCT 512

DOB 2/22/12
 Tatt P147
 Reg. 17309237

| | |
|----|-----|
| BW | -.2 |
| WW | 66 |
| YW | 113 |
| M | 25 |

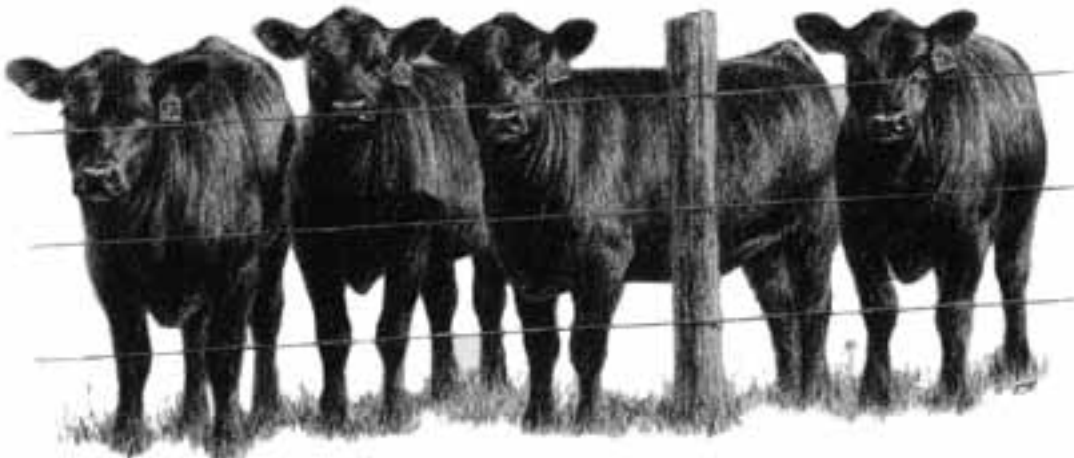
| | | | |
|----|-----|------|------|
| BW | WW | ADG | YW |
| 82 | 775 | 3.52 | 1258 |
| 99 | 109 | 87 | 103 |

VQA BULL

Consignor: **PHILLIPS MOUNTAIN ANGUS GARRETT PHILLIPS**



S A V FINAL ANSWER 0035



Join us for the
41st Great Southwest *More for Your Money Sale*
 October 19th, 2013 in Wytheville, VA
www.swvaangus.org



LIVE INTERNET BIDDING AT **www.cowbuyer.com**

- View/bid online in Real Time
- Registration is required. Please register at least one (1) hour prior to sale time at www.cowbuyer.com
- High Speed Internet is required. Slower speed will not permit you to bid and keep pace in real time.
- Terms: Purchasing online constitutes a legal contract and promise for payment of purchases. All purchases must be paid within ten (10) days of sale date and prior to load out or delivery of cattle purchased.
- Cowbuyer LLC is a service provider and is not responsible for the activity or inactivity of any technology, internet connection at the sale site or connection and technology of the bidders

For questions or information, contact:

Aaron Ray Tompkins – 336/363-4639, atompkin@vt.edu

Kinley Jones – 336-429-2869, jones.kinley@yahoo.com

| Lot | FS | M | S | TS | SC | Rib Fat | Rump Fat | RE | %IM | \$B |
|-----|-----|---|---|----|------|---------|----------|------|------|-------|
| 51 | 6.5 | 2 | 3 | 13 | 33.0 | .30 | .43 | 11.1 | 5.11 | |
| 52 | 6.2 | 2 | 3 | 13 | 37.0 | .41 | .46 | 12.0 | 4.31 | 73.78 |
| 53 | 7.2 | 3 | 3 | 15 | 31.5 | .37 | .34 | 12.5 | 3.92 | 51.50 |
| 54 | 6.2 | 3 | 3 | 14 | 38.0 | .37 | .43 | 12.9 | 4.94 | |
| 55 | 6.5 | 3 | 3 | 14 | 34.5 | .27 | .30 | 14.4 | 5.06 | 81.02 |
| 56 | 6.4 | 2 | 2 | 12 | 37.0 | .32 | .43 | 14.1 | 4.74 | 78.38 |
| 57 | 6.6 | 3 | 3 | 15 | 38.5 | .28 | .35 | 13.6 | 4.10 | 75.99 |
| 58 | 6.0 | 3 | 3 | 14 | 38.0 | .46 | .46 | 13.3 | 5.49 | 69.02 |
| 59 | 6.1 | 3 | 3 | 14 | 36.5 | .41 | .36 | 13.9 | 4.67 | 71.35 |
| 60 | 6.6 | 3 | 3 | 15 | 38.5 | .43 | .49 | 14.1 | 7.82 | 84.84 |
| 61 | 5.9 | 3 | 3 | 15 | 34.0 | .47 | .48 | 14.6 | 4.37 | 68.59 |
| 62 | 5.8 | 3 | 3 | 15 | 32.0 | .46 | .54 | 14.3 | 4.38 | 59.64 |
| 63 | 5.9 | 3 | 3 | 14 | 33.5 | .53 | .53 | 13.6 | 4.95 | 59.63 |
| 64 | 7.0 | 3 | 3 | 14 | 36.0 | .38 | .44 | 14.6 | 5.95 | 86.45 |
| 65 | 5.9 | 3 | 3 | 14 | 36.0 | .26 | .35 | 14.4 | 2.78 | 74.14 |
| 66 | 4.9 | 4 | 3 | 14 | 33.0 | .30 | .39 | 13.3 | 2.66 | 74.25 |
| 67 | 5.0 | 2 | 2 | 12 | 37.5 | .34 | .32 | 10.8 | 4.70 | 77.66 |
| 68 | 6.0 | 2 | 3 | 13 | 38.0 | .26 | .29 | 12.5 | 4.57 | 61.28 |
| 69 | 6.0 | 3 | 3 | 15 | 36.0 | .58 | .53 | 13.7 | 6.50 | 84.73 |
| 70 | 4.9 | 2 | 3 | 13 | 38.0 | .30 | .38 | 12.5 | 3.13 | 48.64 |
| 71 | 5.4 | 2 | 3 | 13 | 35.0 | .25 | .45 | 13.2 | 5.43 | 44.38 |
| 72 | 5.3 | 3 | 3 | 14 | 35.5 | .39 | .61 | 12.4 | 5.82 | 65.96 |
| 73 | 6.8 | 3 | 3 | 13 | 37.0 | .47 | .49 | 14.8 | 6.23 | 69.48 |
| 74 | 6.0 | 3 | 3 | 14 | 40.5 | .24 | .30 | 13.8 | 3.12 | 74.51 |
| 75 | 6.1 | 2 | 3 | 12 | 38.0 | .36 | .49 | 10.8 | 4.64 | 66.53 |
| 76 | 5.0 | 3 | 3 | 13 | 32.5 | .47 | .49 | 13.8 | 6.19 | 64.77 |
| 77 | 5.6 | 3 | 3 | 14 | 35.0 | .29 | .36 | 12.3 | 3.49 | 69.68 |
| 78 | 6.1 | 3 | 3 | 14 | 34.0 | .38 | .41 | 14.6 | 3.53 | 54.99 |
| 79 | 6.4 | 3 | 3 | 14 | 41.5 | .40 | .39 | 14.9 | 6.99 | 83.62 |
| 80 | 5.6 | 3 | 3 | 14 | 34.0 | .34 | .31 | 13.9 | 3.16 | 78.44 |
| 81 | 6.1 | 3 | 3 | 14 | 37.5 | .29 | .32 | 12.0 | 3.86 | 76.25 |
| 82 | 6.1 | 3 | 4 | 12 | 43.5 | .37 | .41 | 13.9 | 5.11 | 67.56 |
| 83 | 6.3 | 3 | 3 | 14 | 38.5 | .35 | .42 | 13.8 | 5.17 | 73.08 |
| 84 | 6.6 | 2 | 2 | 12 | 37.5 | .34 | .38 | 12.7 | 6.91 | 71.23 |
| 85 | 4.8 | 3 | 3 | 14 | 34.0 | .14 | .30 | 14.1 | 2.43 | 60.86 |
| 86 | 5.6 | 3 | 3 | 15 | 31.5 | .36 | .40 | 12.7 | 6.16 | 86.53 |
| 87 | 5.5 | 2 | 3 | 12 | 34.0 | .27 | .36 | 11.4 | 4.26 | 72.12 |
| 88 | 5.8 | 3 | 4 | 13 | 36.0 | .33 | .33 | 13.3 | 6.89 | 90.30 |
| 89 | 6.7 | 4 | 3 | 15 | 36.0 | .58 | .46 | 14.0 | 5.99 | 84.09 |
| 90 | 6.4 | 3 | 4 | 13 | 40.0 | .49 | .58 | 12.9 | 4.17 | 68.82 |
| 91 | 6.0 | 3 | 3 | 14 | 35.0 | .24 | .30 | 14.6 | 3.97 | 75.48 |
| 92 | 6.2 | 3 | 3 | 14 | 34.0 | .43 | .41 | 13.2 | 6.76 | 83.53 |
| 93 | 6.0 | 3 | 3 | 14 | 35.5 | .41 | .36 | 12.4 | 5.16 | 67.19 |
| 94 | 6.7 | 3 | 3 | 16 | 34.0 | .50 | .47 | 12.8 | 5.66 | 83.52 |
| 95 | 6.5 | 3 | 3 | 15 | 34.0 | .35 | .37 | 13.9 | 4.88 | 80.26 |
| 96 | 5.7 | 3 | 3 | 14 | 34.0 | .45 | .41 | 13.9 | 6.47 | 74.51 |
| 97 | 5.9 | 3 | 3 | 14 | 37.5 | .31 | .43 | 13.6 | 6.40 | 82.99 |
| 98 | 6.9 | 3 | 3 | 14 | 38.0 | .38 | .36 | 14.4 | 5.68 | 88.47 |
| 99 | 6.4 | 4 | 3 | 16 | 33.5 | .50 | .50 | 13.4 | 6.79 | 77.81 |
| 100 | 6.6 | 3 | 3 | 14 | 38.0 | .37 | .33 | 14.1 | 4.81 | 57.44 |
| 101 | 6.3 | 3 | 2 | 14 | 33.0 | .45 | .59 | 12.9 | 7.19 | 85.95 |
| 102 | 5.8 | 3 | 3 | 14 | 39.0 | .53 | .48 | 13.0 | 6.65 | 57.70 |
| 103 | 5.3 | 4 | 3 | 14 | 38.0 | .27 | .38 | 13.6 | 5.46 | |